



environmental affairs

Department:
Environmental Affairs
REPUBLIC OF SOUTH AFRICA



energy

Department:
Energy
REPUBLIC OF SOUTH AFRICA

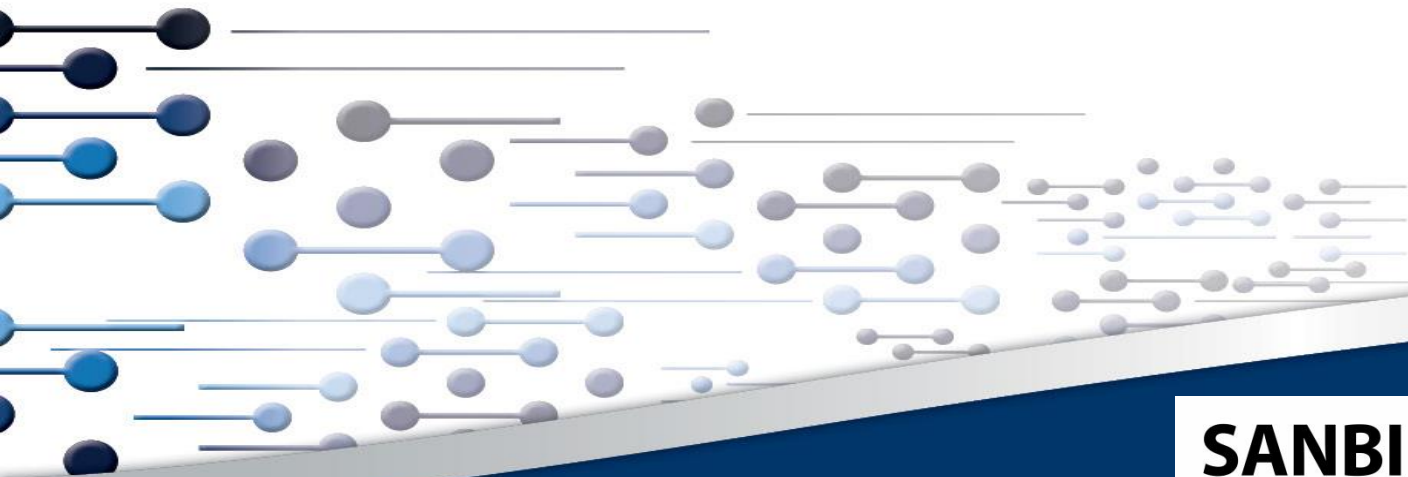


public enterprises

Department:
Public Enterprises
REPUBLIC OF SOUTH AFRICA



Corridor Refinement Process for the Phased Gas Pipeline and EGI corridors **27 November 2019**



SANBI

Biodiversity for Life

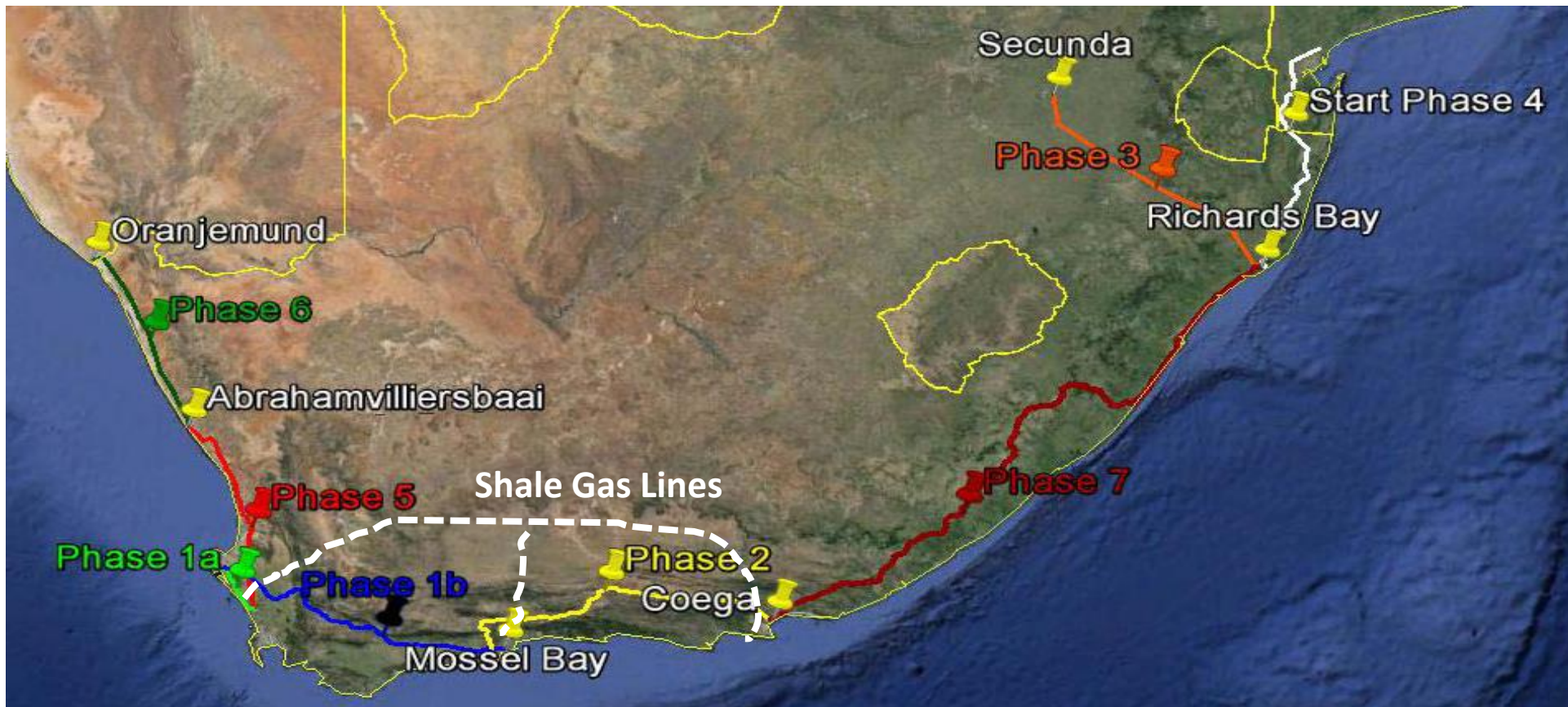


South African National Biodiversity Institute

CSIR

our future through science

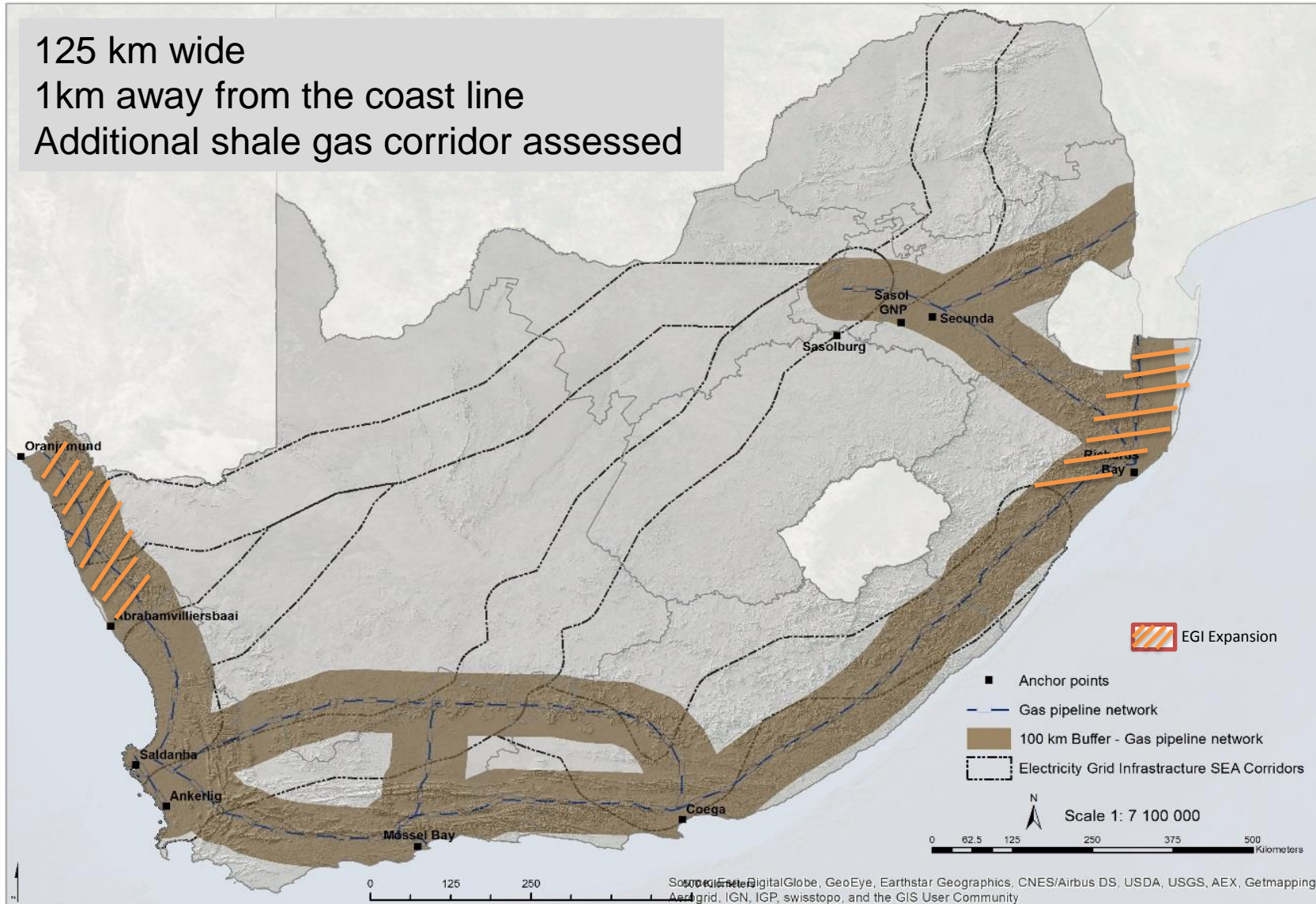
Phakisa A1 Phased Gas Pipeline Network



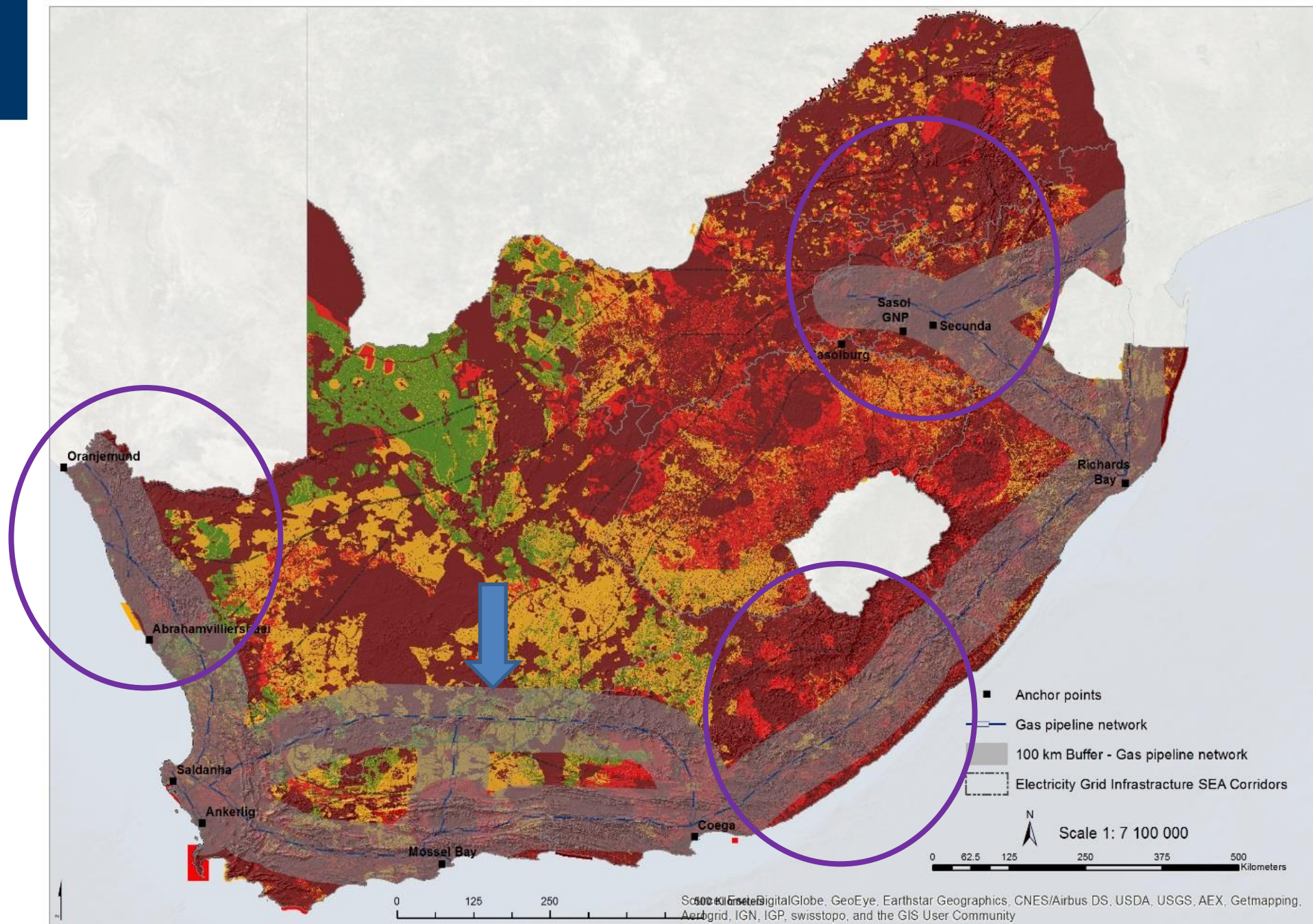
Phasing

- Phase 1a: Saldanha to Ankerlig
- Phase 1b: Saldanha to Mossel Bay
- Phase 2: Mossel Bay to Coega
- Phase 3: Richards Bay to Secunda
- Phase 4: Mozambique Southern Border to Richards Bay
- Phase 5: Abrahamvilliersbaai to Ankerlig Take-off
- Phase 6: Phase 1 to Oranjemund (Namibia)
- Phase 7: Coega to Richards Bay
- Rompco: Komatiepoort to Secunda**
- Shale Gas: Beaufort West to Phase 2**

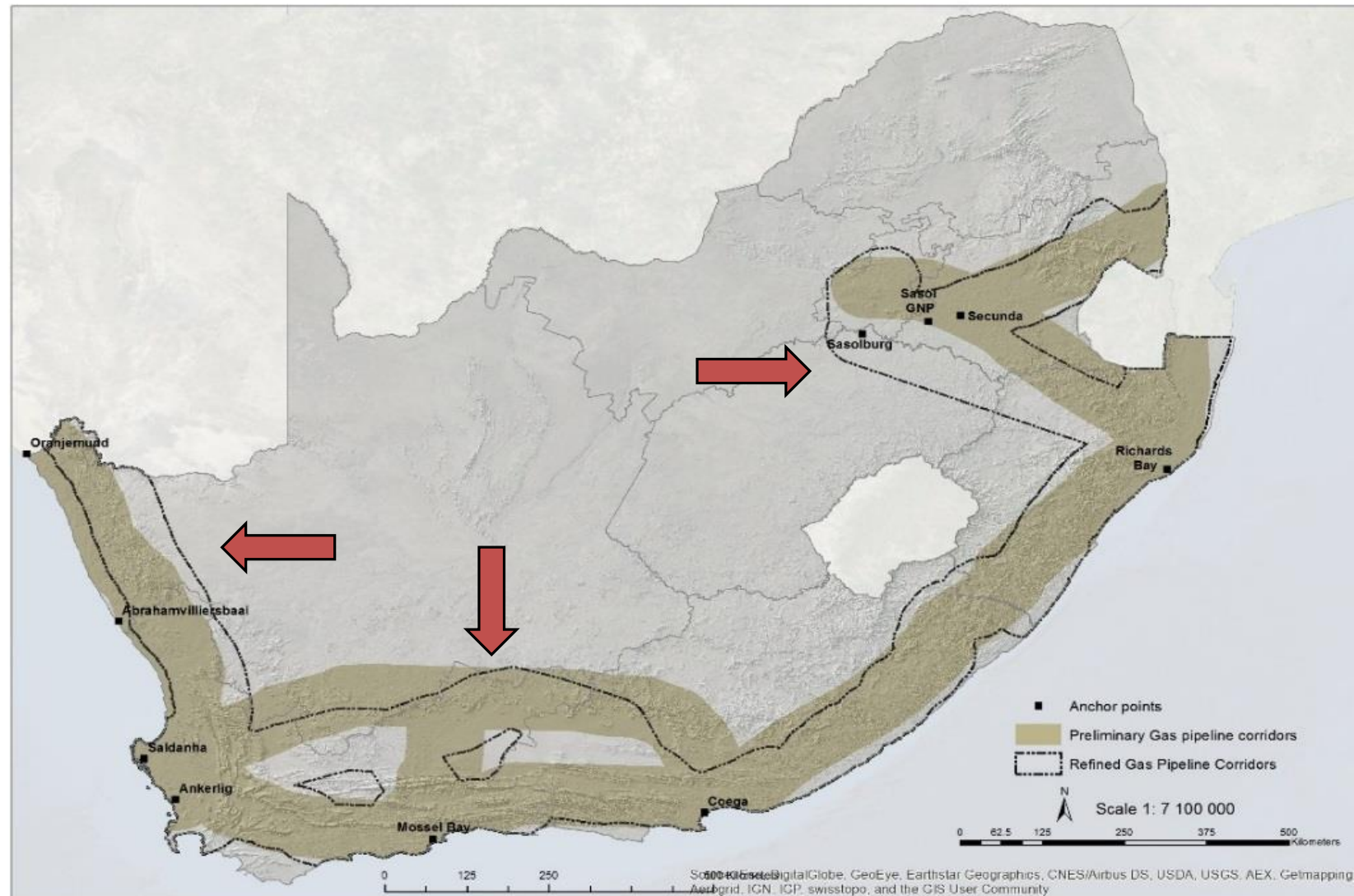
Draft Initial Corridors PGP & EGI



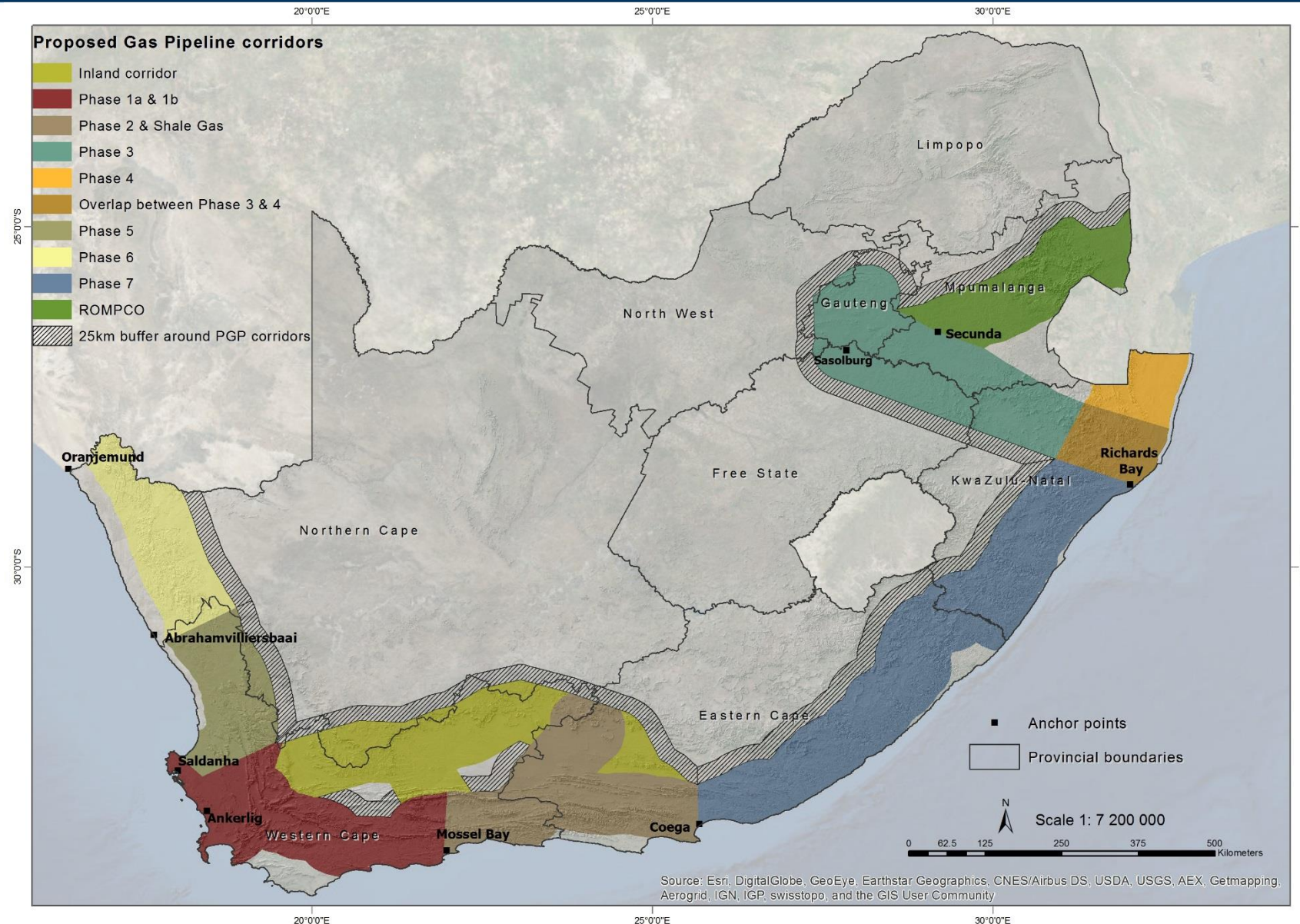
First round of
pinch points to
refine corridors



Corridor Refinement

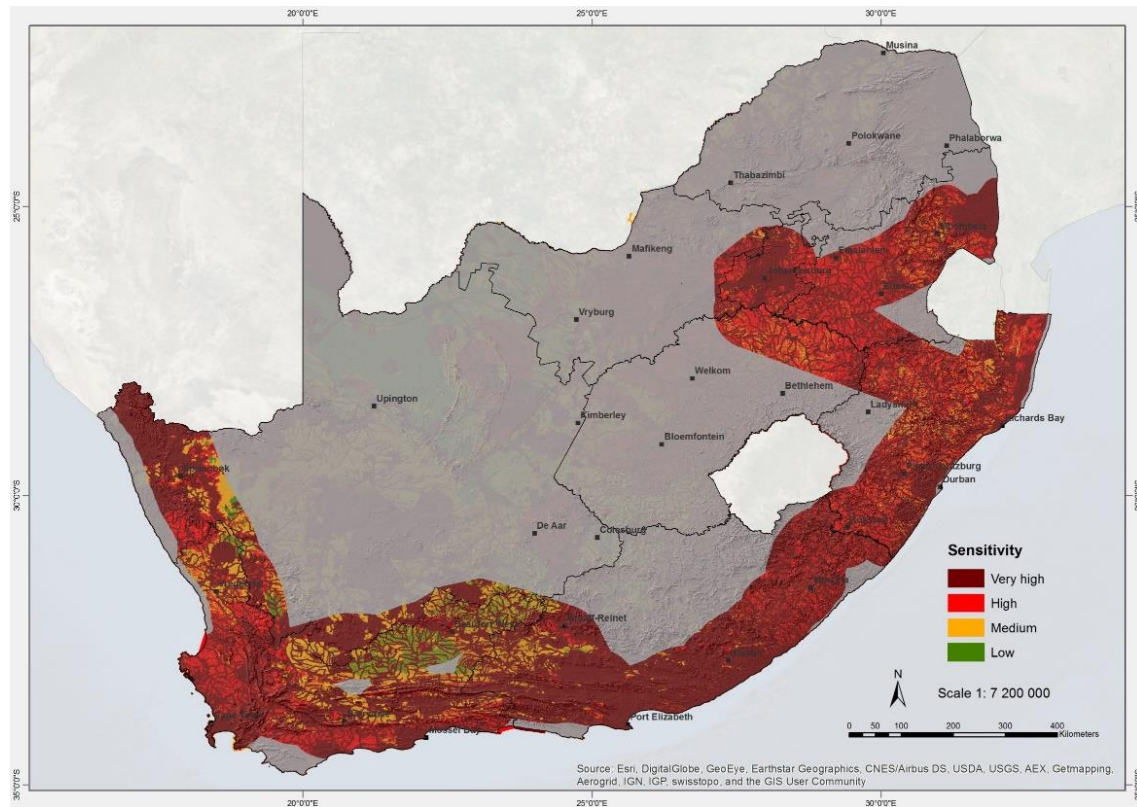


Corridors for Specialist Assessment

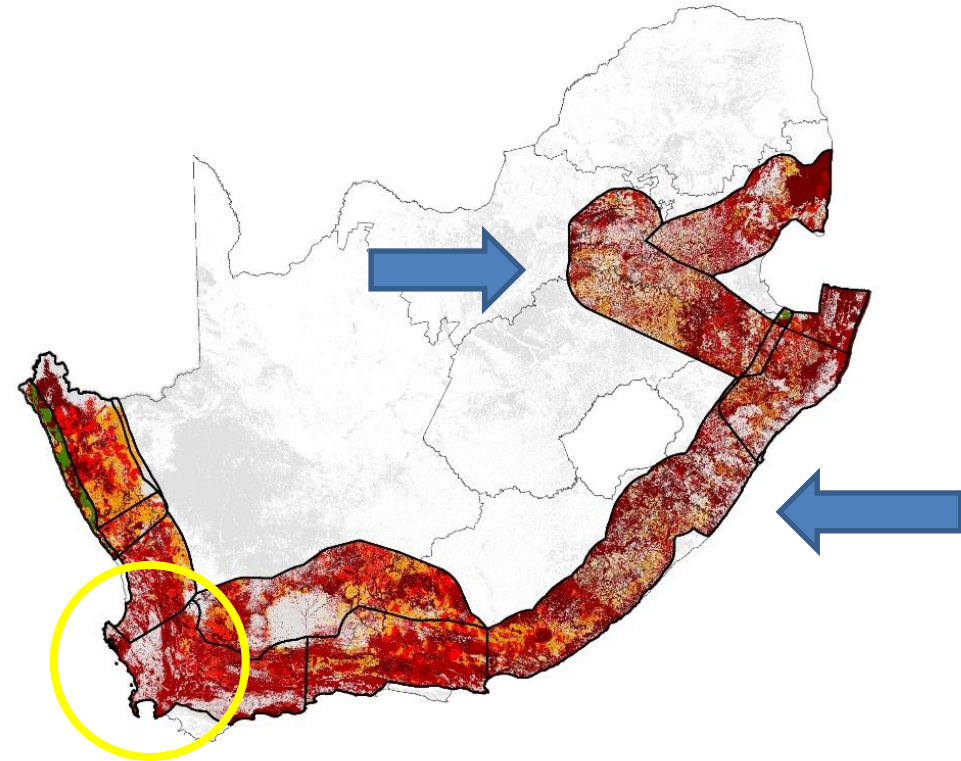


Wall to Wall Constraints for the Gas Pipeline Corridors

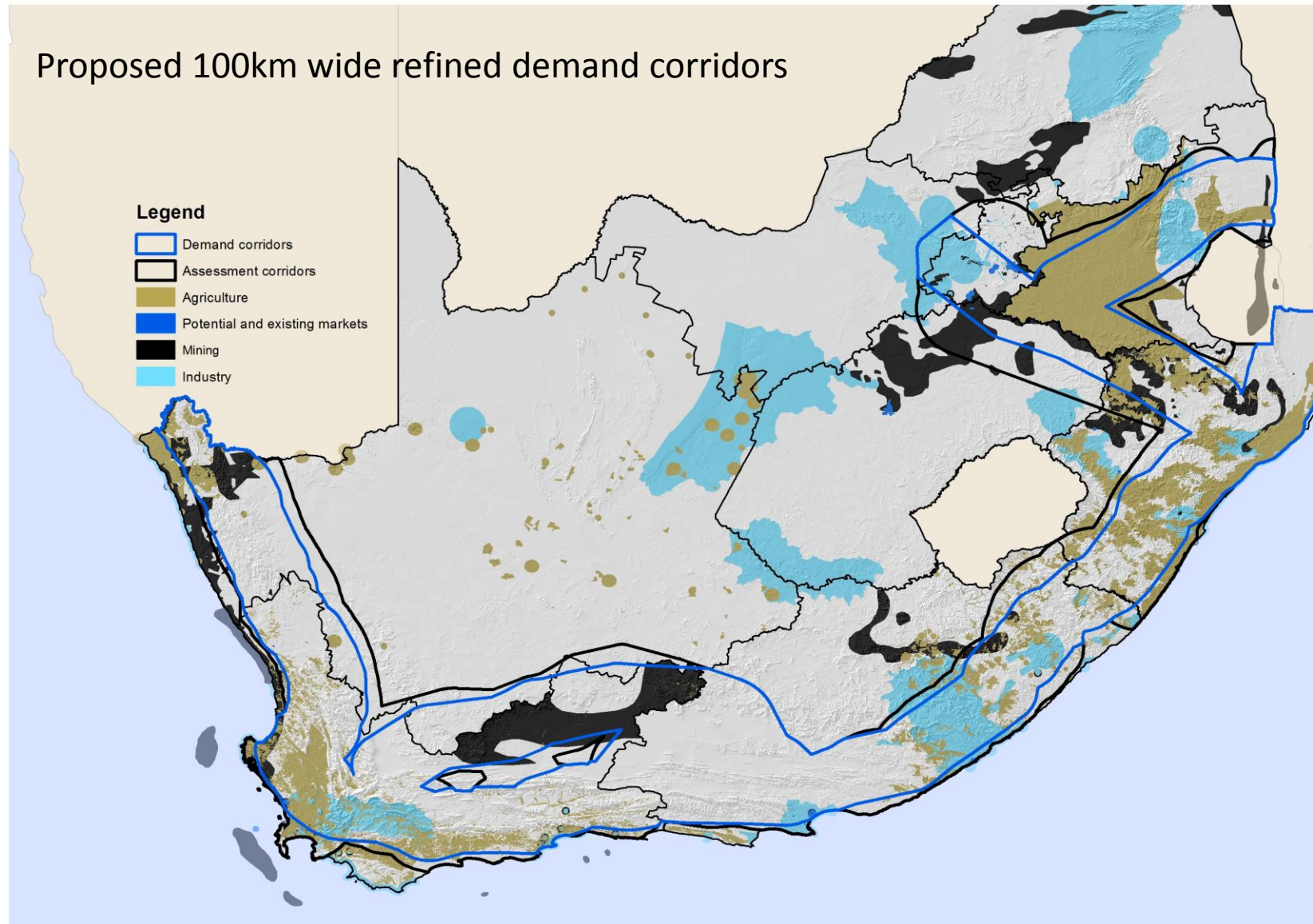
Pre Specialist Assessment Studies



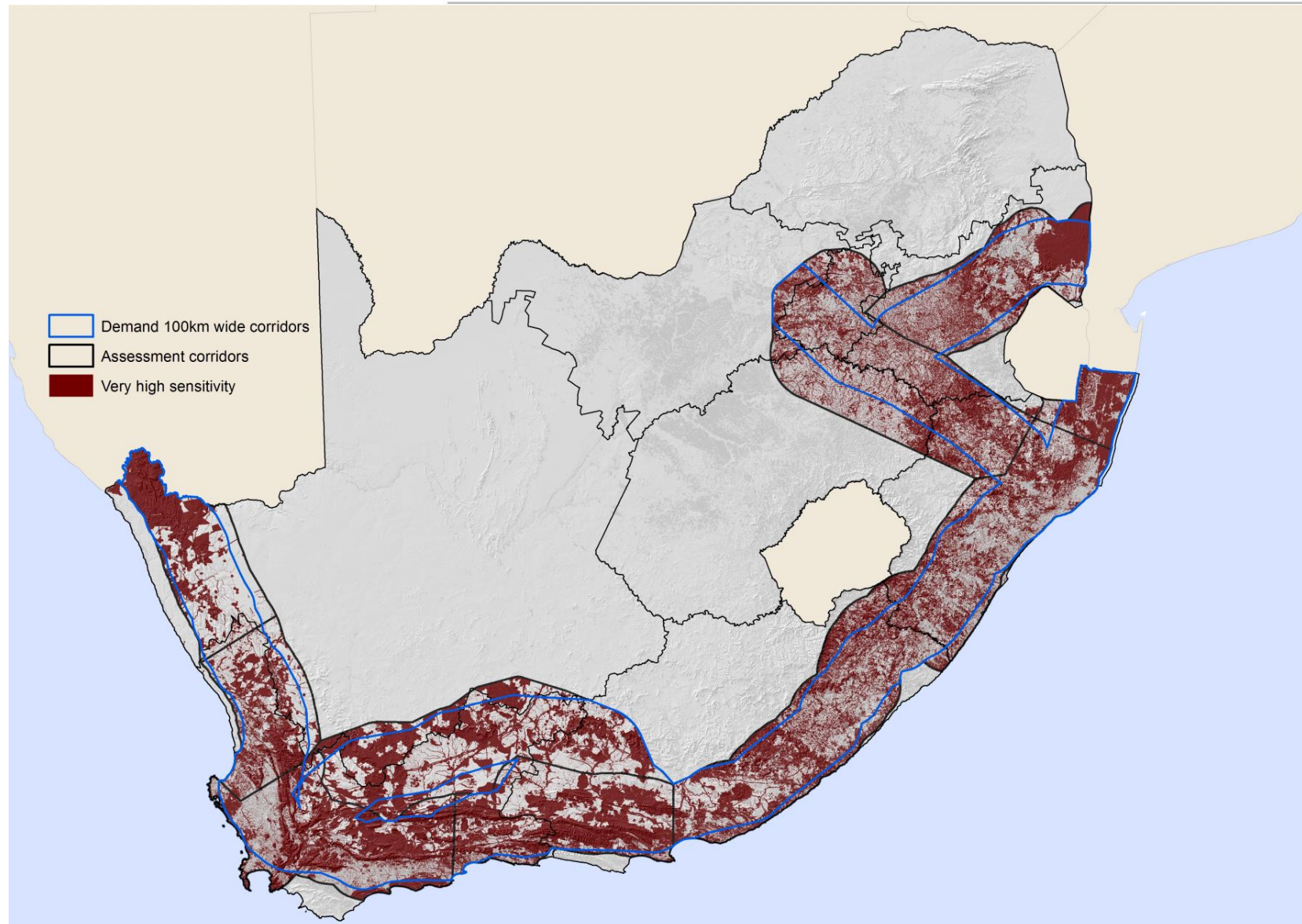
Post Specialist Assessment Studies



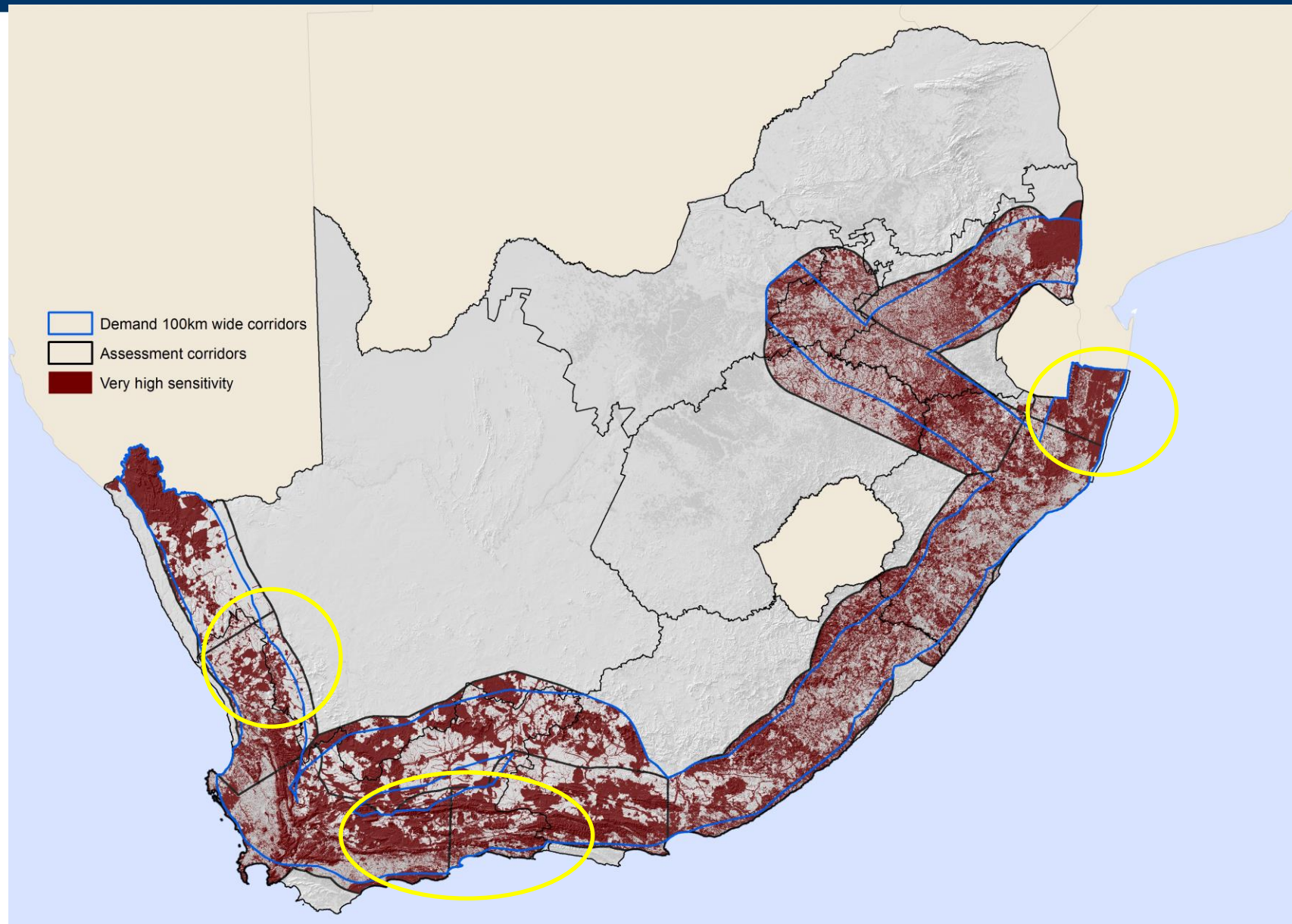
Demand Mapping for Gas



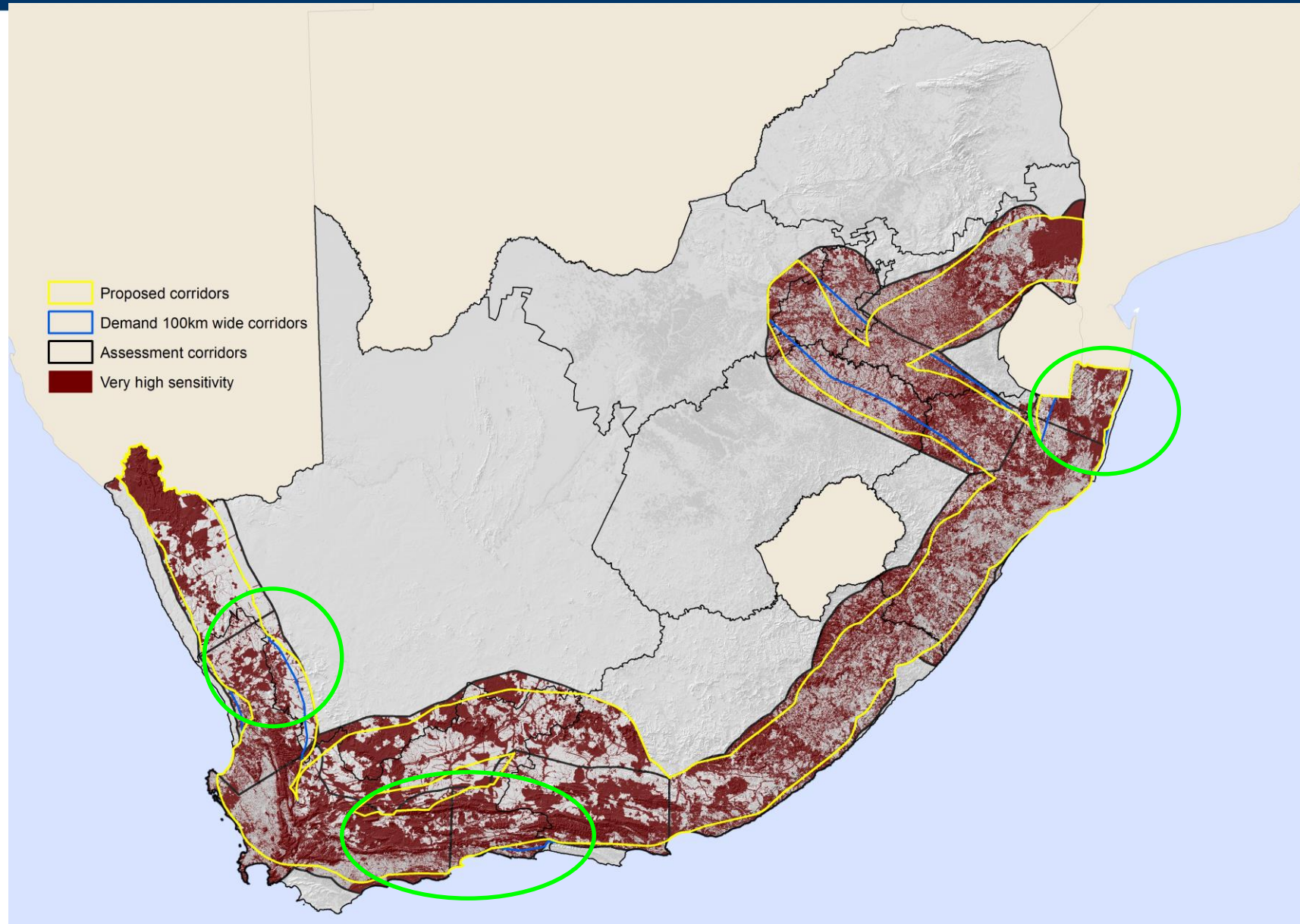
100km wide Demand Mapping Corridors - VH Engineering and Environmental Constraints



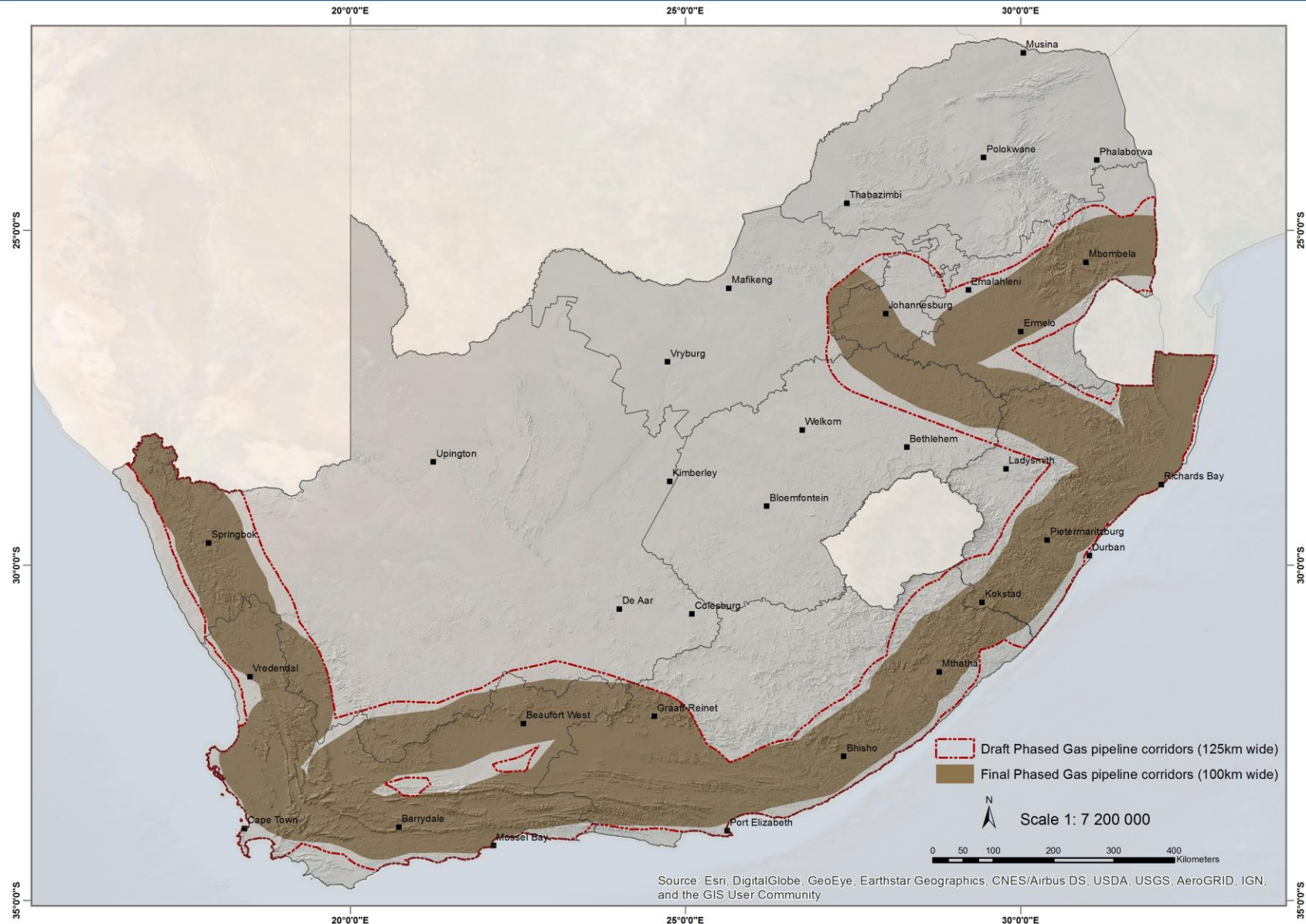
Potential Pinch Points



Proposed Gas Pipeline Corridors

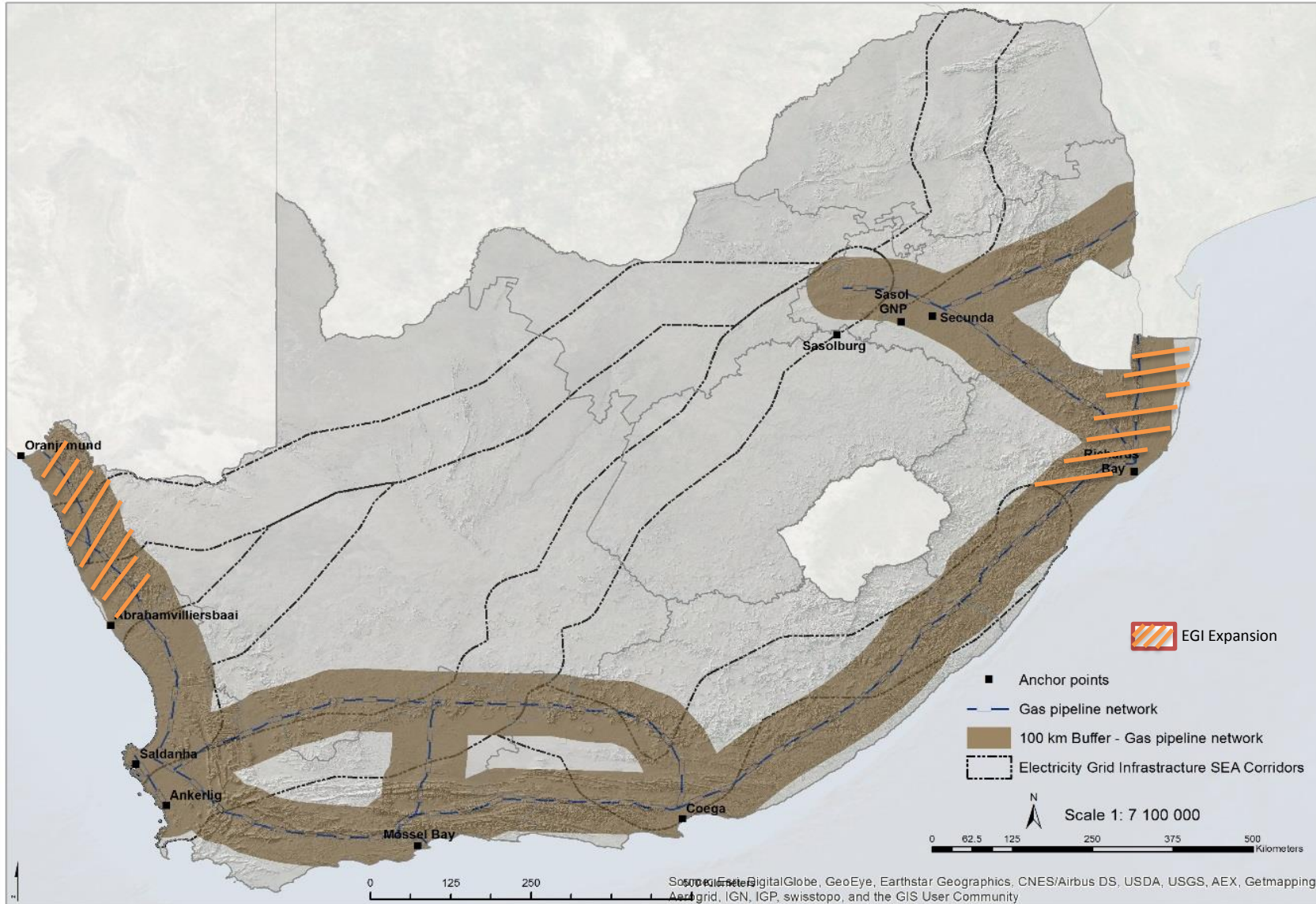


Final 100km wide Gas Pipeline Corridors

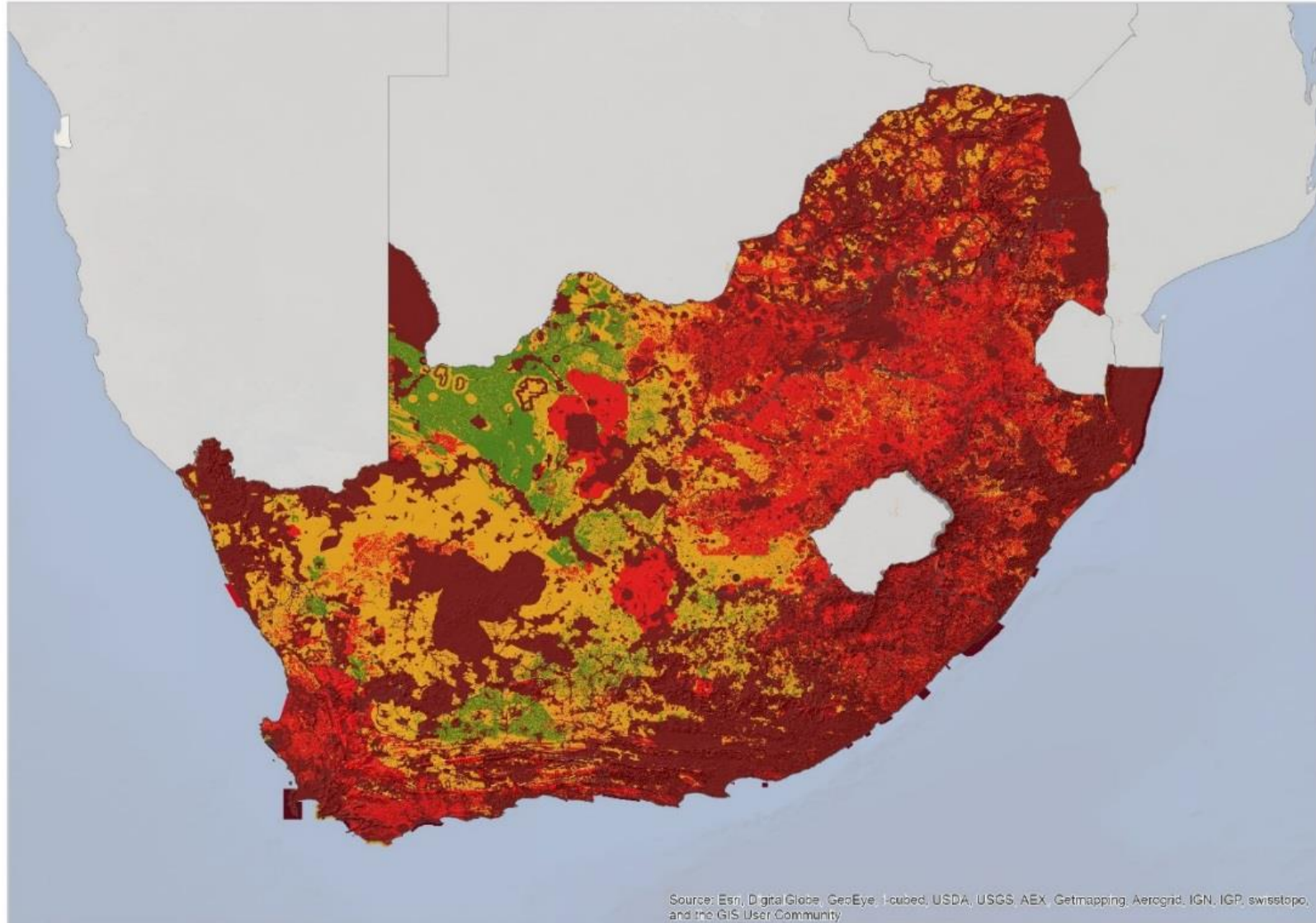


Electricity Grid Infrastructure Corridor Refinement

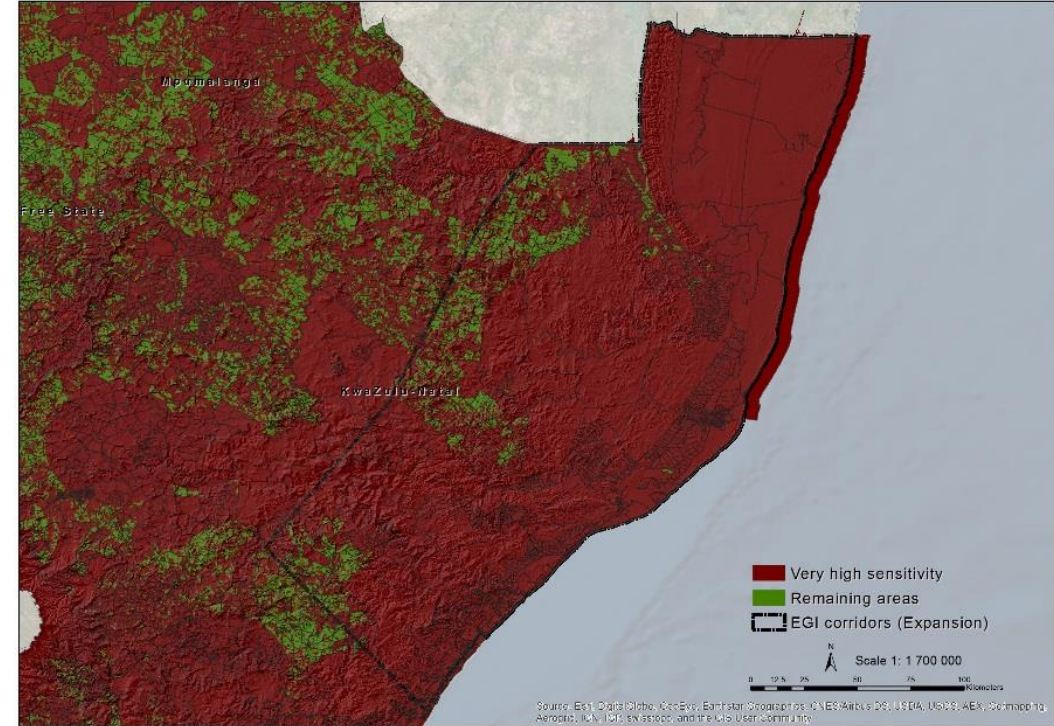
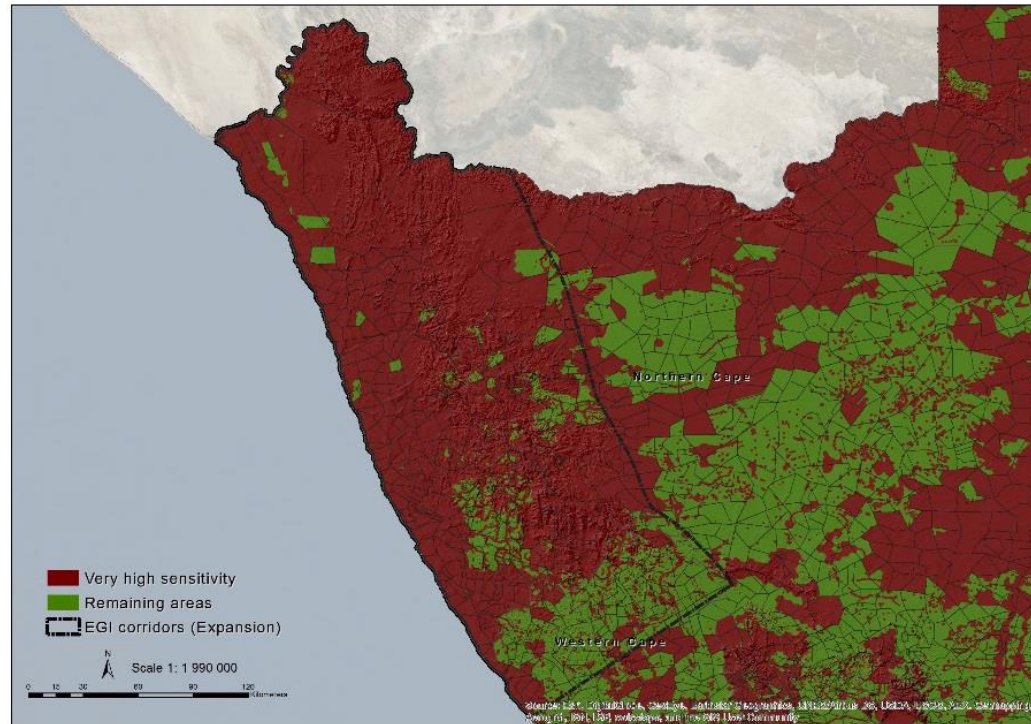
DRAFT Initial Corridors PGP & EGI



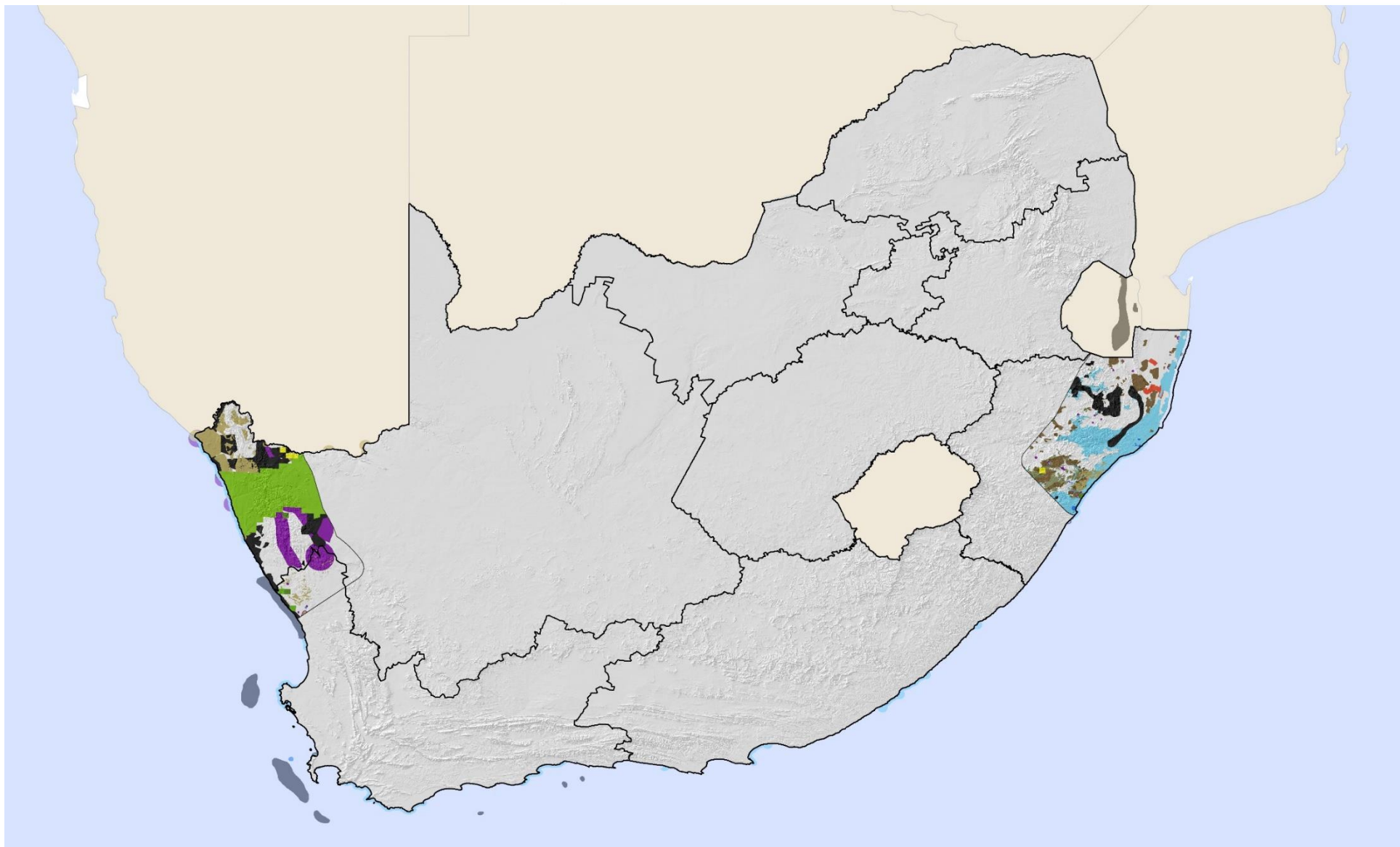
Wall to Wall Sensitivity Map



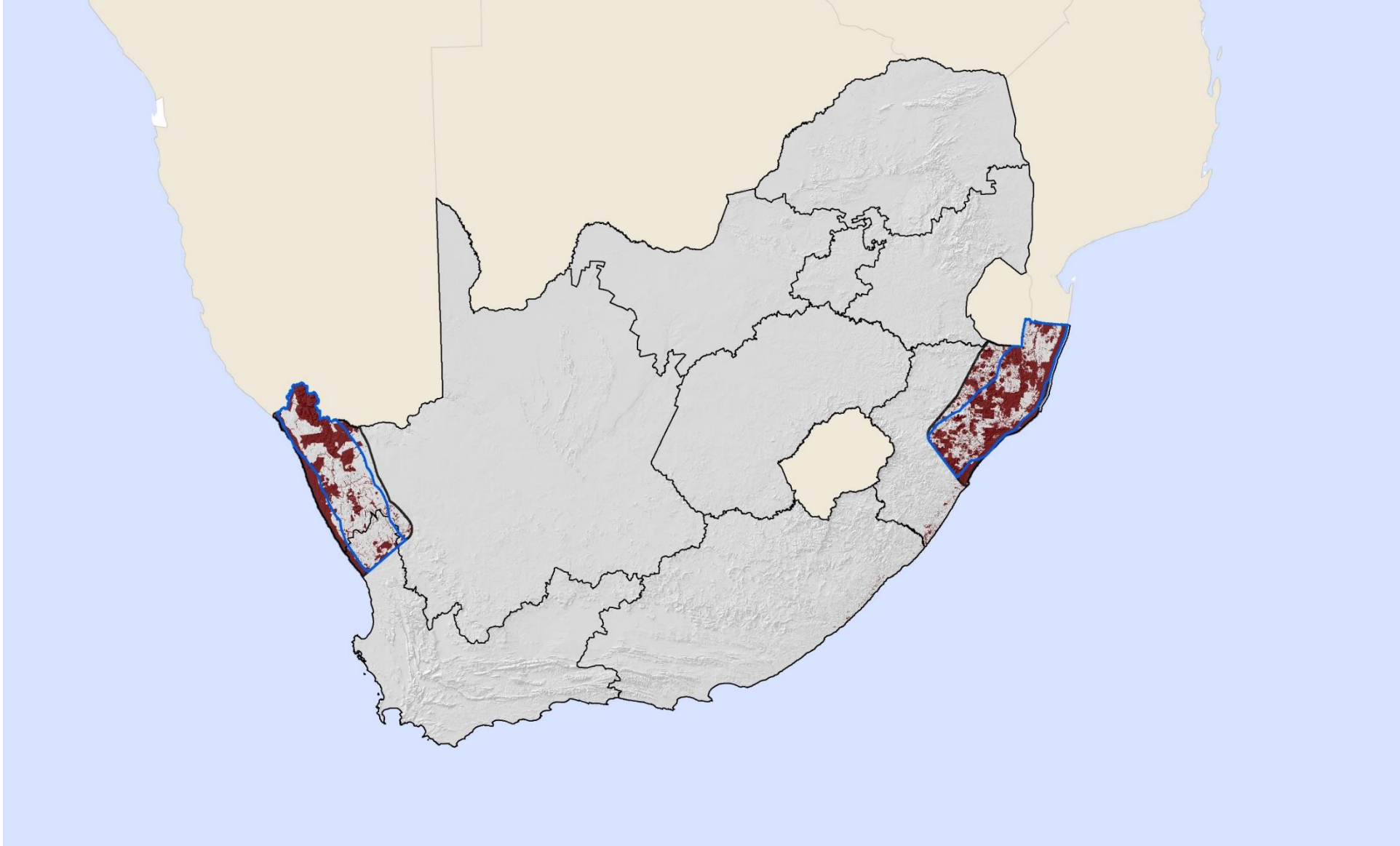
Specialist Assessment Corridors



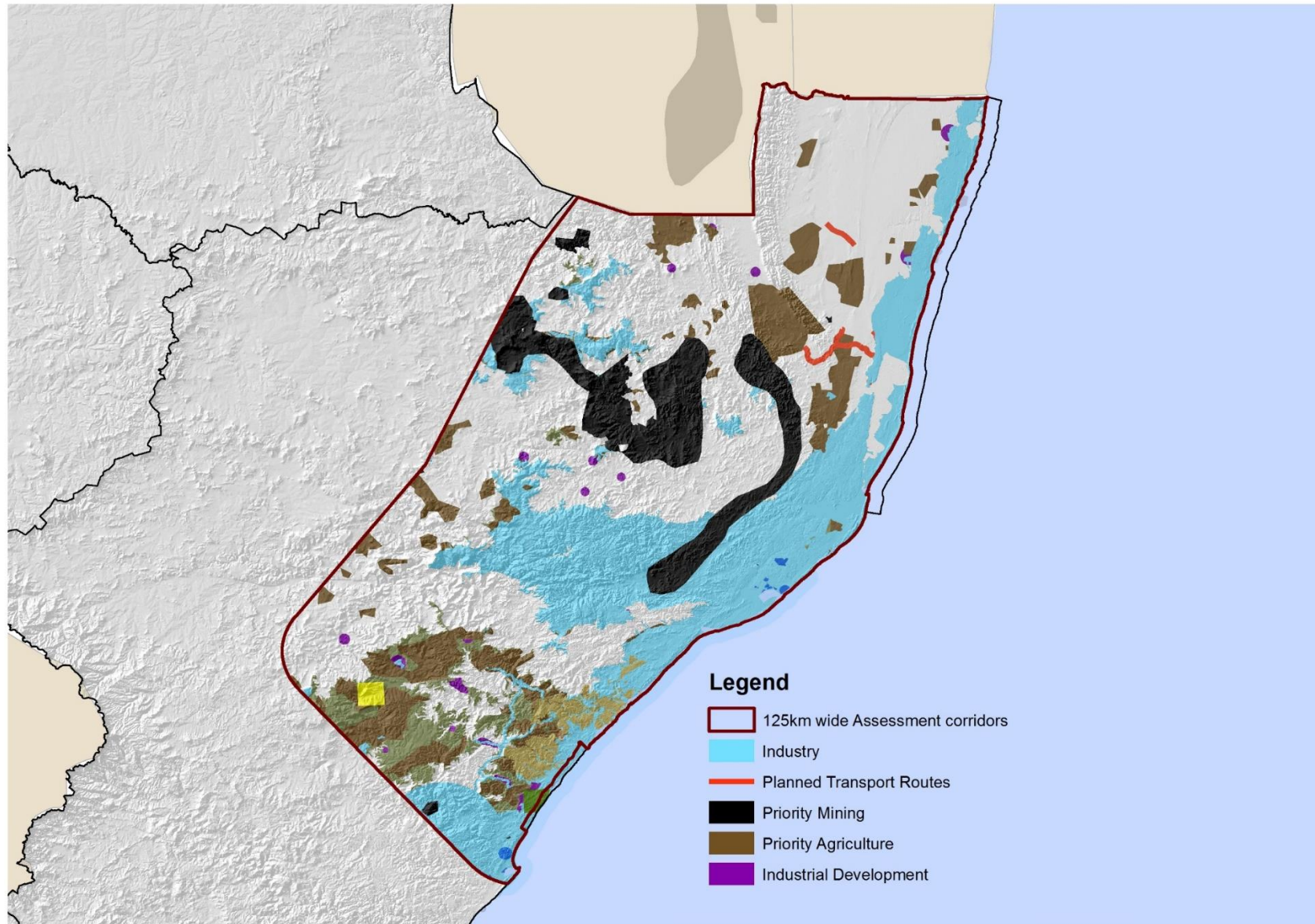
Demand Mapping for EGI Corridors



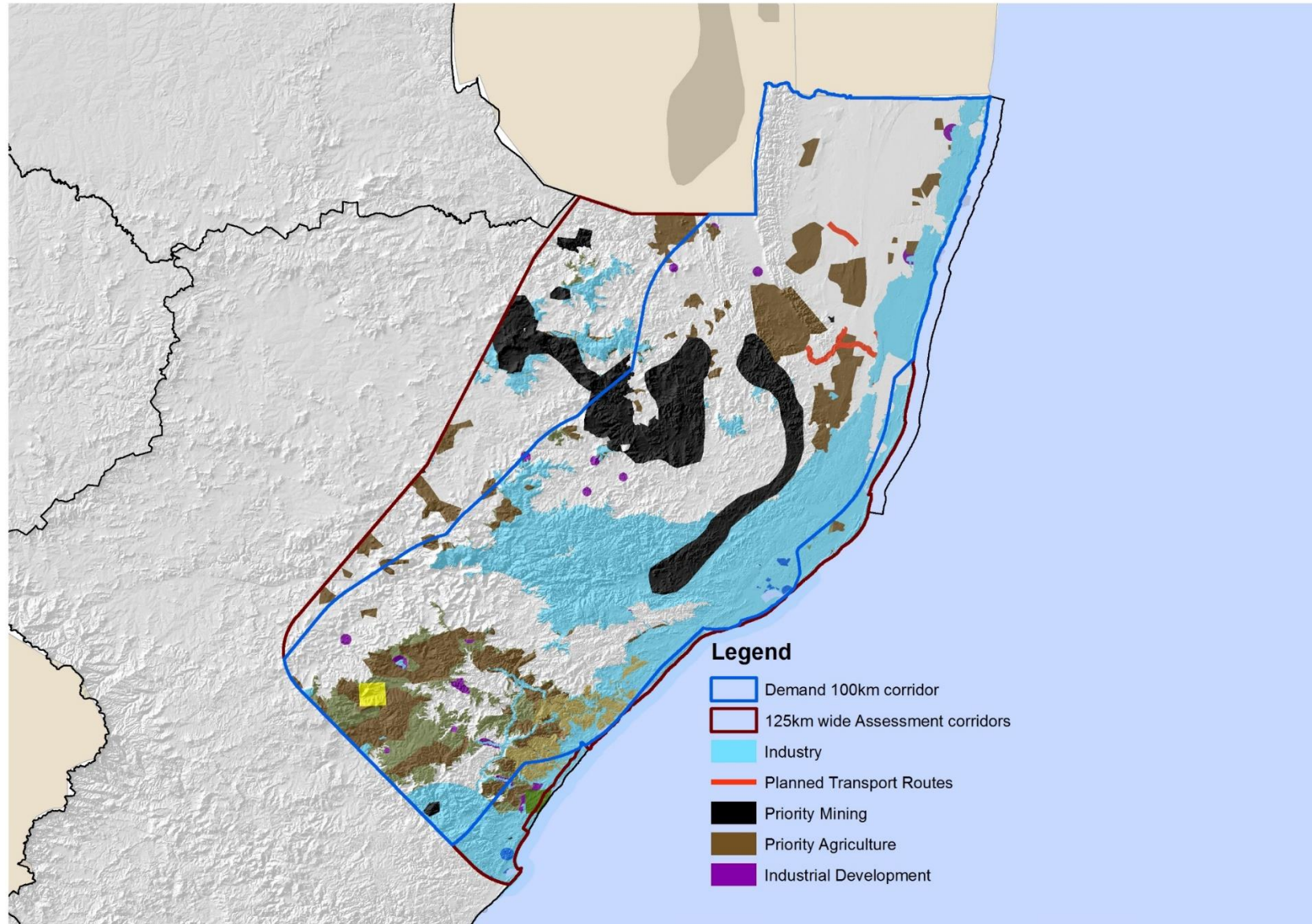
Western and Eastern Expanded EGI Corridor - VH Engineering and Environmental Constraints



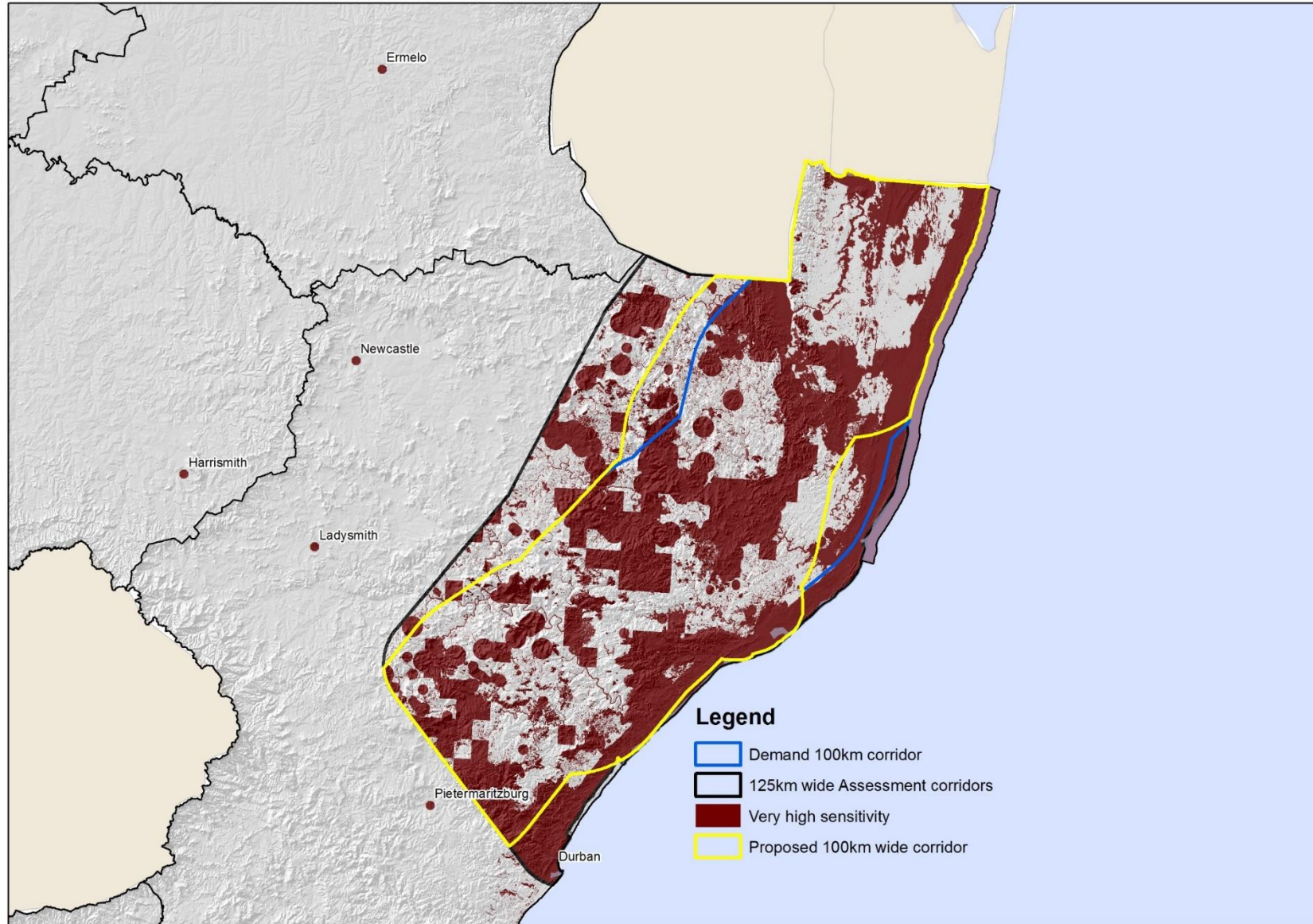
Eastern Expanded EGI Corridor: Demand mapping



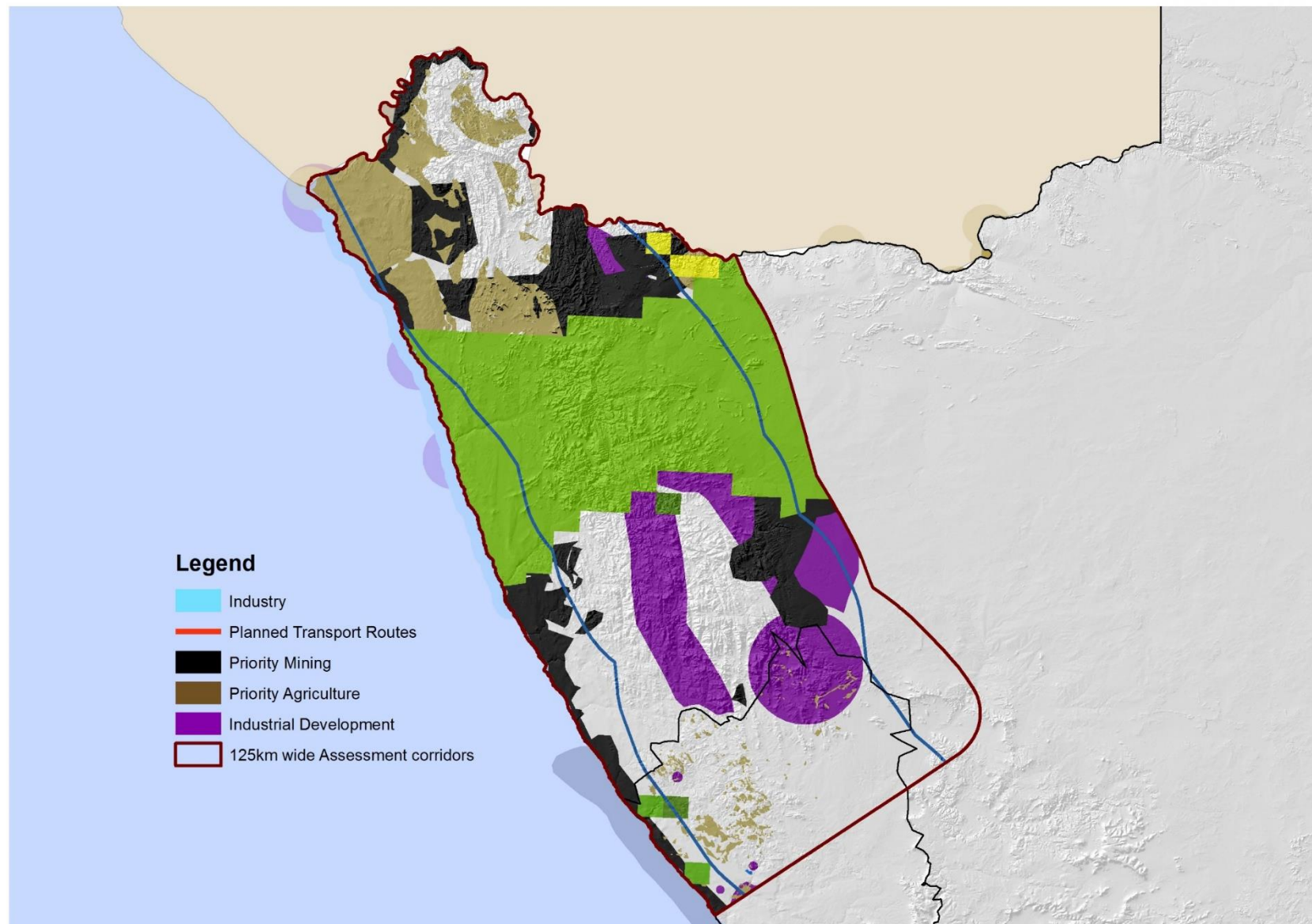
Eastern Expanded EGI Corridor - Demand Mapping



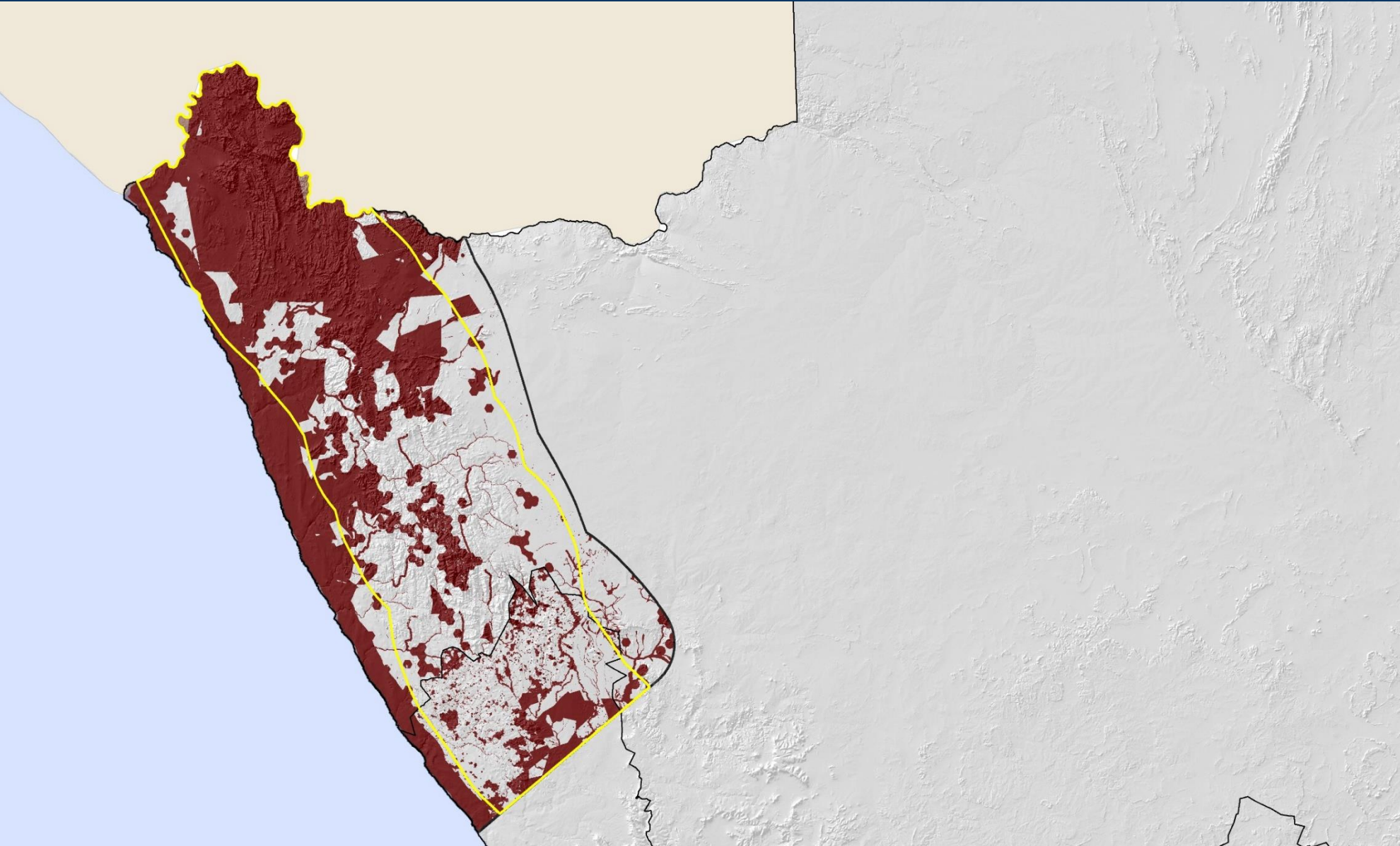
Proposed Final Eastern Expanded EGI Corridor



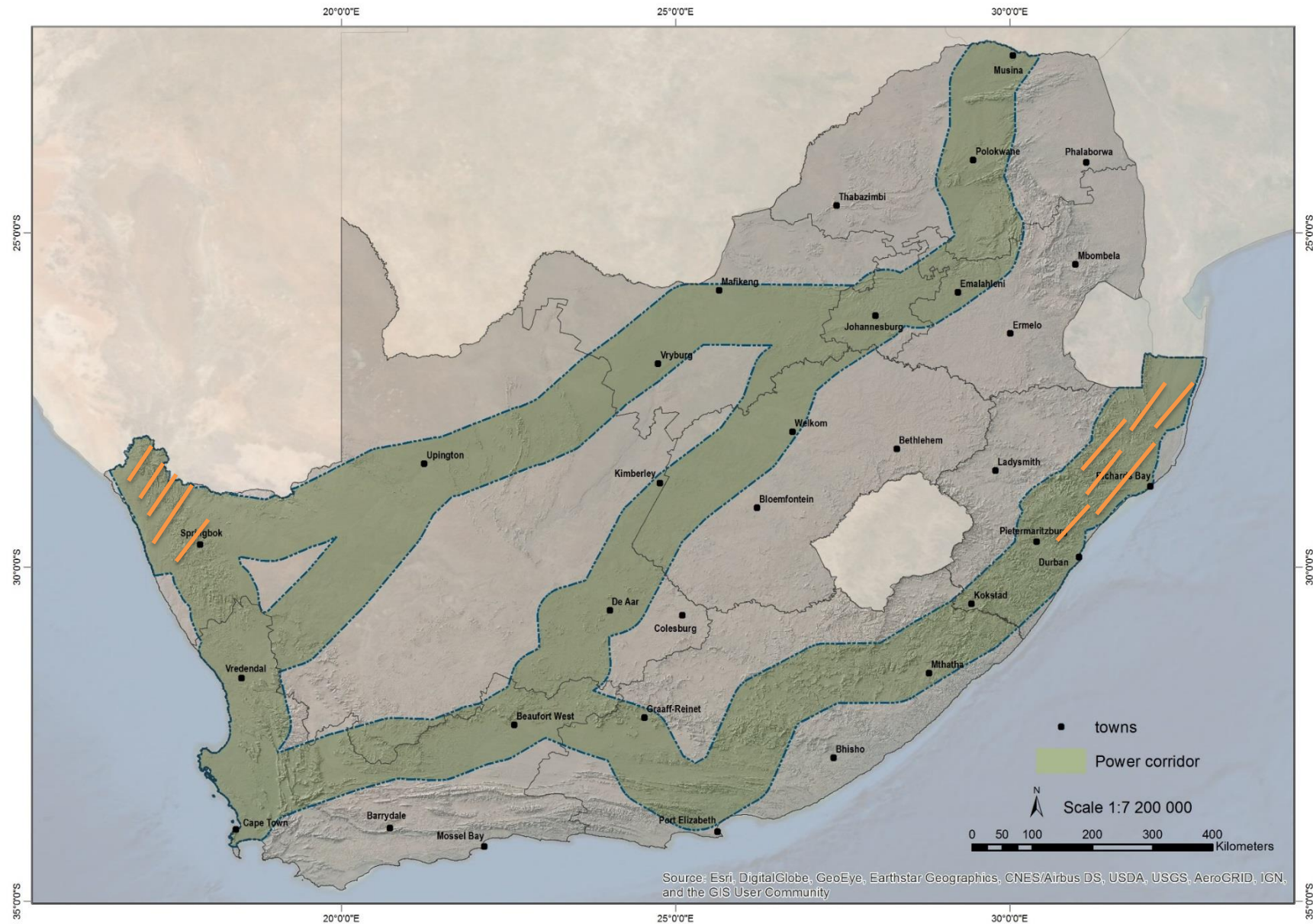
Western Expanded EGI Corridor - Demand Mapping



Western Expanded EGI Corridor: Environment and Engineering



Final Expanded EGI Corridors (including Gazetted EGI Corridors)



Thank you