



environmental affairs

Department:
Environmental Affairs
REPUBLIC OF SOUTH AFRICA



energy

Department:
Energy
REPUBLIC OF SOUTH AFRICA



public enterprises

Department:
Public Enterprises
REPUBLIC OF SOUTH AFRICA



Development of a Strategic Environmental Assessment for the Identification of Energy Corridors, as well as Assessment and Management of a Gas Pipeline Network for South Africa

Project Steering Committee and Expert Reference Group Meeting 3

04 July 2019
09H45 – 14H00

SANBI

Biodiversity for Life



South African National Biodiversity Institute

CSIR

our future through science

Meeting Agenda

TIME	ACTIVITY/PRESENTATION	PRESENTER
09:45 – 10:00	Tea and Registration	All
10:00 – 10:10	Welcome and Introductions	DEA
10:10 – 10:45	Background and Progress on the SEA Process	CSIR
10:45 – 11:45	Pinch Point Analysis and Final Corridors	SANBI
11:45 – 12:00	Break	All
12:00 – 12:30	Pinch Point Analysis and Final Corridors (Continued)	SANBI
12:30 – 13:00	Discussion	All
13:00 – 13:30	Way Forward and Closing	All
13.30 – 14.00	Lunch	All

Background and Progress on the SEA Process

Gas Transmission Pipeline Network & EGI Expansion

SEA Process

Key Stakeholders Consultation
ERG, PSC, Sector Specific Meetings

Public Outreach 1

Public Outreach 2

PHASE 2: Assessment

PHASE 3 Decision-support outputs and Gazetting

Late 2019 – Early 2020

SEA Outputs

PHASE 1:
Inception

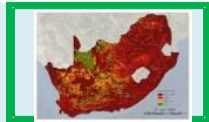
Task I
Initial Corridors
(Starting Point)
June 2017

Preliminary
Corridors



Task II
(Negative Mapping)
Sept 2017-Jan 2018

W2W
Environmental
Constraints Map



W2W
Engineering
Constraints Map



Task III
(Corridor Refinement)
Nov 2017 – Feb 2018

Draft
Corridors



Draft Corridor
Environmental
Constraints Map



Task IV
(Environmental Assessment)
December 2017 – August 2019

Specialist
Studies



We are here
*Draft Specialist
Report Release and
Final Corridor
Alignment*

Review and
Final corridor
alignments

Final Corridors

Final Corridor
Environmental
Constraints Map

MIR, EMPr and
Protocols

Phase 1: Inception

Project Initiation Phase:

- April 2017 – June 2017
- Convened ERG and PSC
- Dedicated Project Website:
<https://gasnetwork.csir.co.za/>
- Dedicated Project Email Address:
gasnetwork@csir.co.za
- Consultation:
 - July 2017 – Adverts → inform stakeholders of the SEA: The Star; Cape Argus; Diamond Fields Advertiser; Daily News; Farmers Weekly; Engineering News
 - Emails to registered I&APs



SEA Process: Phase 2

Key Stakeholders Consultation
ERG, PSC, Sector Specific Meetings

Public Outreach 1

Public Outreach 2

PHASE 2: Assessment

PHASE 1:
Inception

Task I
Initial Corridors
(Starting Point)
June 2017

Preliminary
Corridors



Task II
(Negative Mapping)
Sept 2017-Jan 2018

W2W
Environmental
Constraints Map



W2W
Engineering
Constraints Map



Task III
(Corridor Refinement)
Nov 2017 – Feb 2018

Draft
Corridors



Draft Corridor
Environmental
Constraints Map



Task IV
(Environmental Assessment)
December 2017 – August 2019

Specialist
Studies



We are here
*Draft Specialist
Report Release and
Final Corridor
Alignment*

Review and
Final corridor
alignments

PHASE 3
Decision-support
outputs and
Gazetting

Late 2019 – Early 2020

SEA Outputs

Final Corridors

Final Corridor
Environmental
Constraints Map

MIR, EMPr and
Protocols

Vision of SEA: Development of a Strategic gas pipeline network and expansion of the gazetted EGI in an environmentally responsible and efficient manner that responds effectively to the country's economic and social development needs.

Effective

- Identify 100 km wide strategic energy corridors at a national scale based on future energy supply and demand requirements, environmental sensitivities as well as social and economic development priorities at a national, regional and localised level. **Routes are not being assessed as part of this SEA.**

Efficient

- Ensure streamlining of the Environmental Assessment Process by pre-assessing environmental sensitivities within the corridors to avoid fatal flaws and focus on the site specific level of assessment required. The tools to achieve this are currently under discussion.
 - E.g. Streamlining → Minimum Information Requirements / Protocols / BA Process
- Enable developers greater flexibility in terms of route options within the assessed corridors (i.e. avoid land negotiation concerns).
- Promote collaborative governance between authorising authorities.

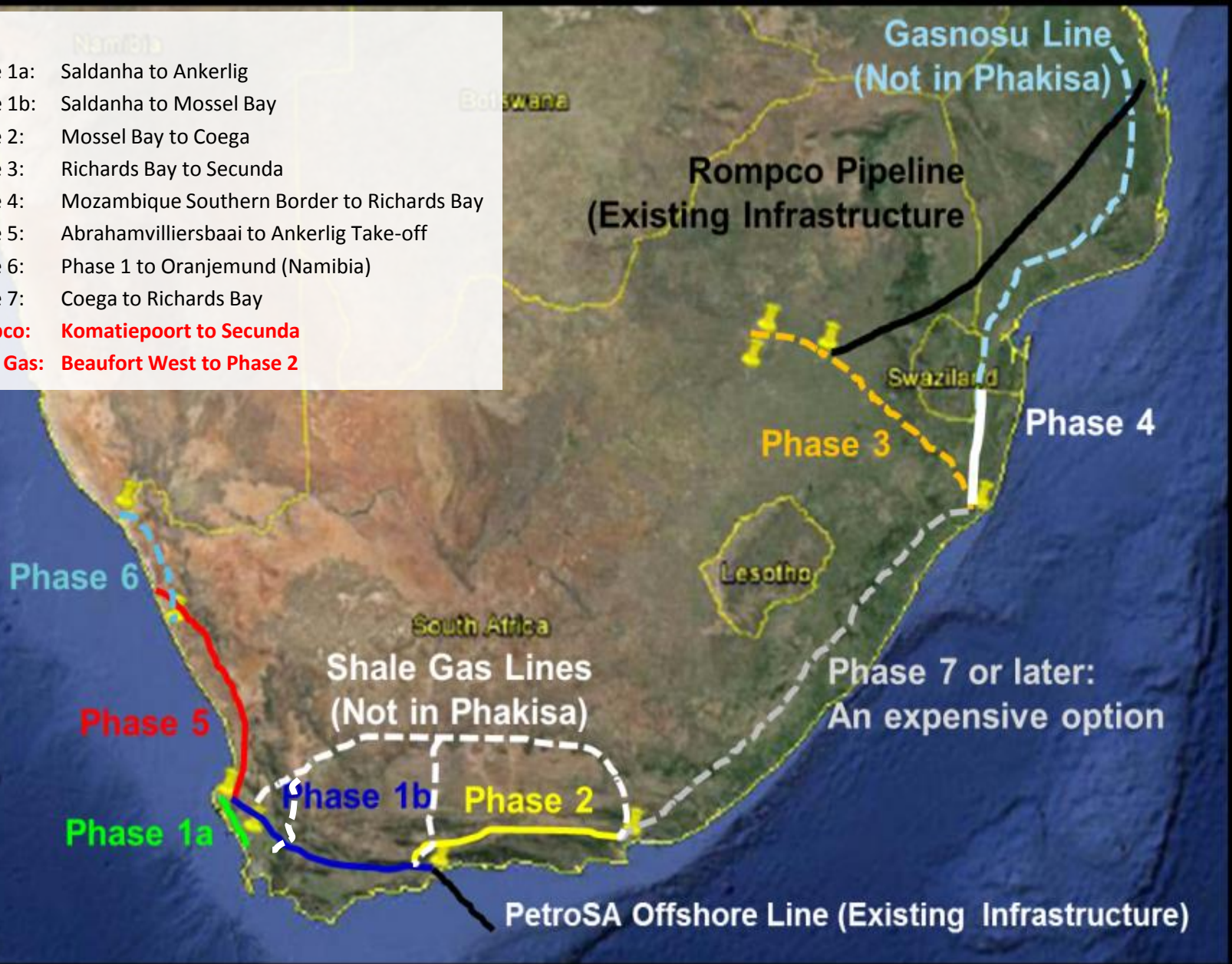
Responsible

- Develop a generic EMP, site specific development protocol, and standards or minimum information requirements.

Phakisa A1 Phased Gas Pipeline Network

Phasing

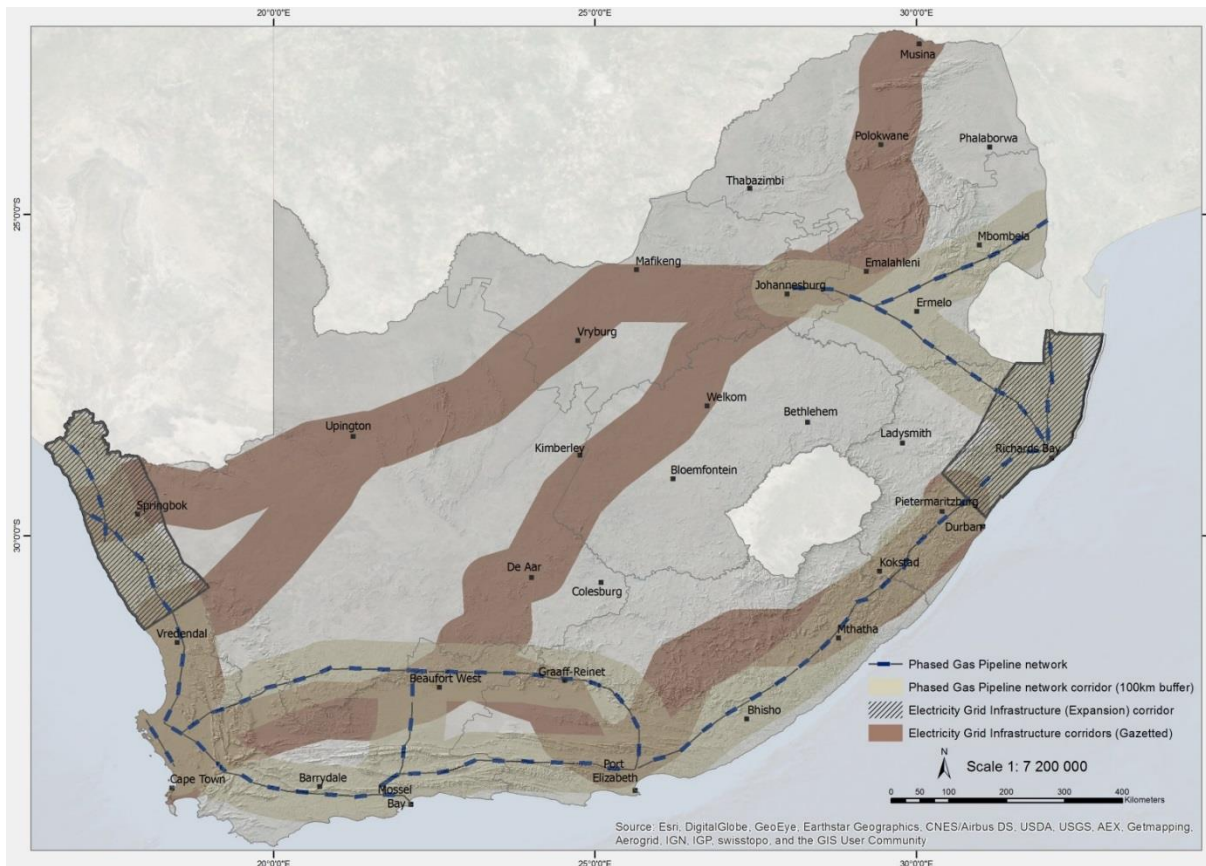
- Phase 1a: Saldanha to Ankerlig
- Phase 1b: Saldanha to Mossel Bay
- Phase 2: Mossel Bay to Coega
- Phase 3: Richards Bay to Secunda
- Phase 4: Mozambique Southern Border to Richards Bay
- Phase 5: Abrahamvilliersbaai to Ankerlig Take-off
- Phase 6: Phase 1 to Oranjemund (Namibia)
- Phase 7: Coega to Richards Bay
- Rompco: Komatipoort to Secunda**
- Shale Gas: Beaufort West to Phase 2**



Phase 2: Assessment – Task I

Draft Initial Corridors:

- 100 km wide
- Based on phased gas pipeline network identified in 2014 Operation Phakisa



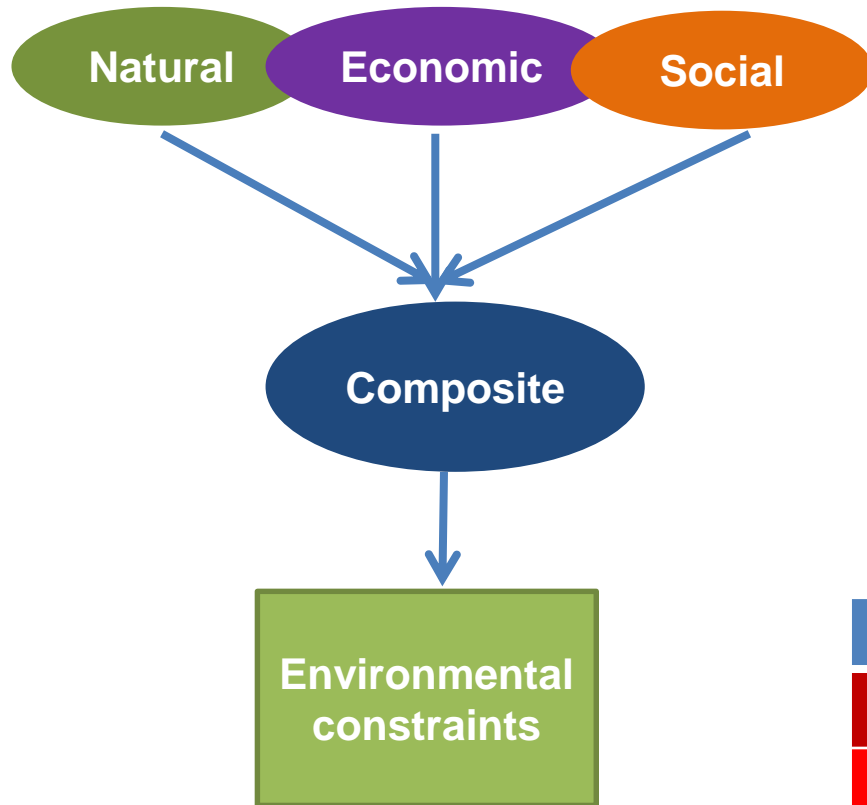
Consultation:

- September 2017: ERG and PSC Meeting 1
- Emails to registered stakeholders

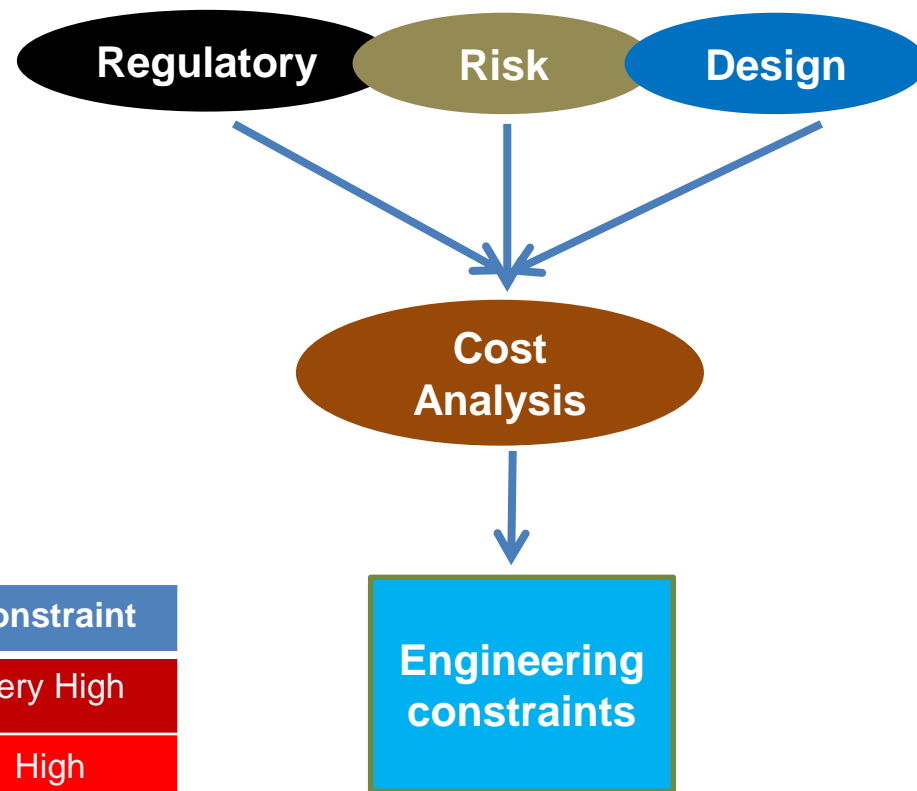
Phase 2: Assessment – Task II

Negative Mapping

Impact of EGI/Gas Pipelines on Environment



Impact of Environment on EGI/Gas Pipeline



Constraint

Very High

High

Medium

Low

Phase 2: Assessment – Task III

Corridor Refinement – Draft Pinch Point Analysis:

- Completed February 2018
- Consideration of Wall to Wall Negative Mapping → Environmental + Engineering Constraints → Shift corridors where possible to contain as many low sensitivity areas as possible.
- Identification of Draft Refined Corridors → 125 km wide → Assessed by Specialists

Consultation:

- October 2017: Adverts → notify stakeholders of Authority and Public Outreach Round 1: Business Day*; City Press*; Cape Argus; Daily Dispatch; Daily News; George Herald; The Gemsbok; The Star
- 1 – 8 Nov 2017: Authority and Public Outreach Round 1: Cape Town; East London; Johannesburg; Durban; Springbok; George
- Emails to registered stakeholders

* = *National Newspapers*

TASK III: REFINED DRAFT GAS CORRIDORS

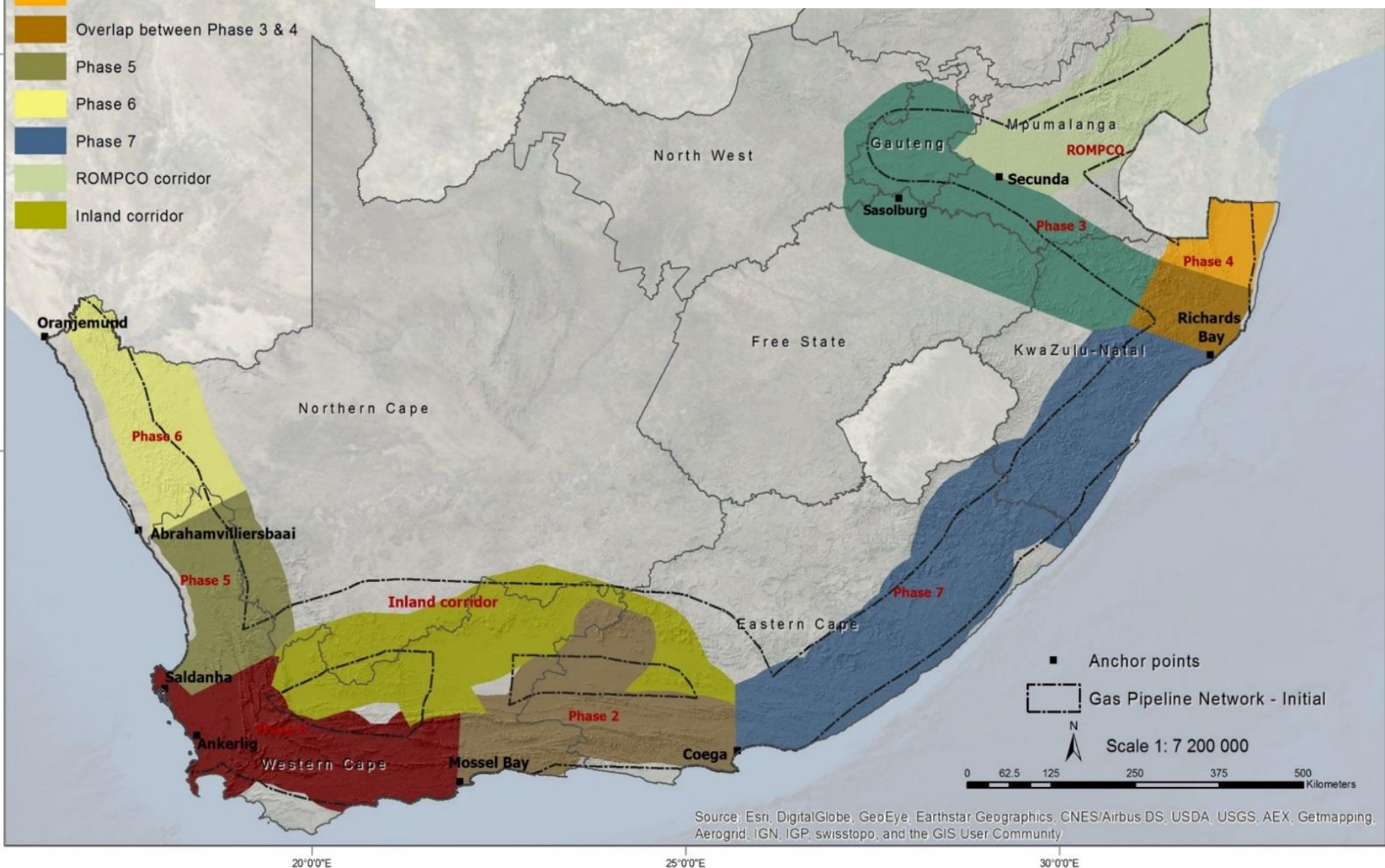
Phases 5 + 6 (Diamond Mining + Protected Areas)

Inland Corridor + Phase 2 (Align with 2016 EGI and Shale Gas SEAs)

Phases 3 + 8 (Greater area of assessment)

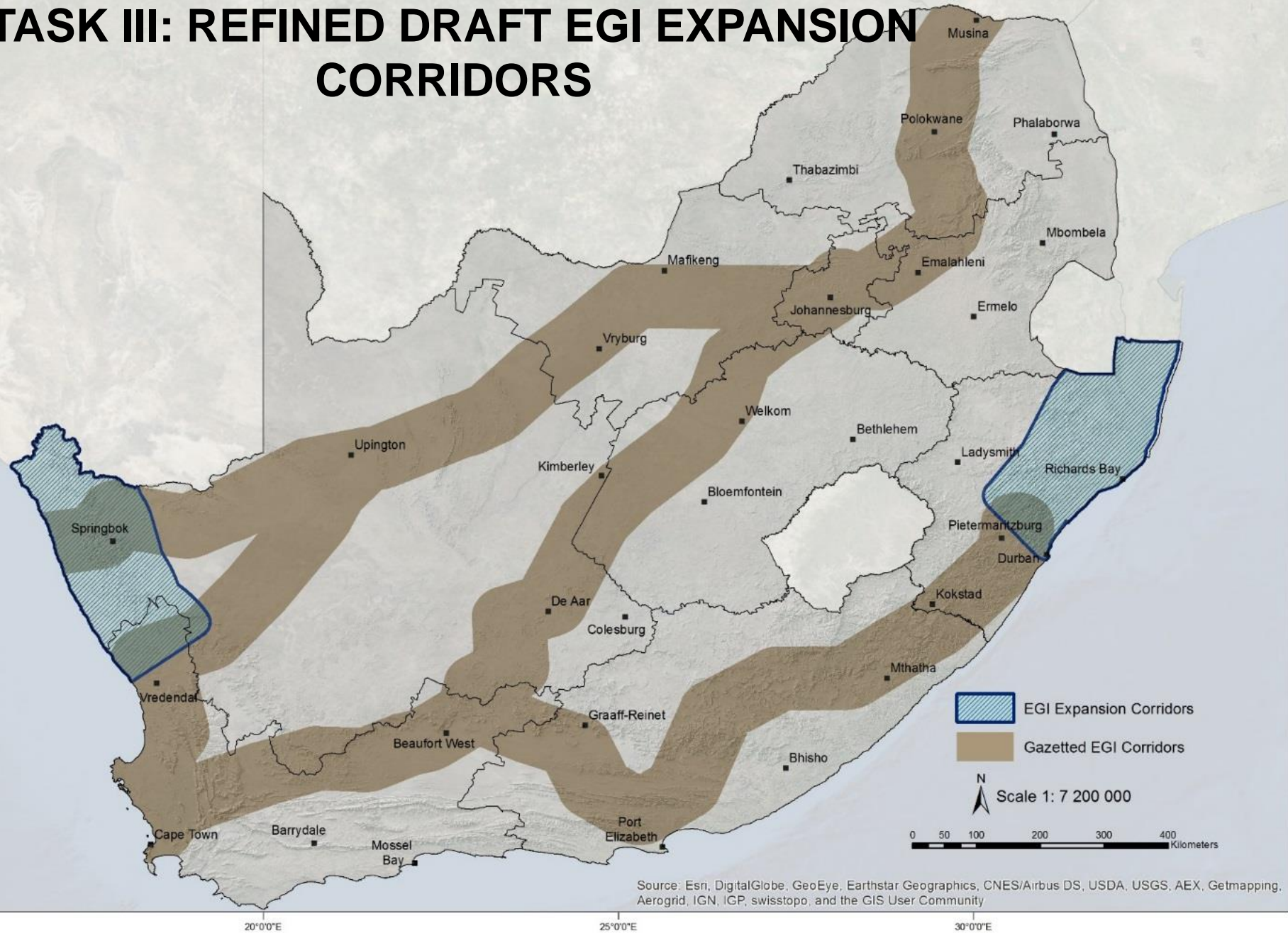
Phased Gas Pipeline Network- Current

- Phase 1a & 1b
- Phase 2 & Shale Gas
- Phase 3
- Phase 4
- Overlap between Phase 3 & 4
- Phase 5
- Phase 6
- Phase 7
- ROMPCO corridor
- Inland corridor



Source: Esri, DigitalGlobe, GeoEye, Earthstar Geographics, CNES/Airbus DS, USDA, USGS, AEX, Getmapping, Aerogrid, IGN, IGP, swisstopo, and the GIS User Community

TASK III: REFINED DRAFT EGI EXPANSION CORRIDORS



Phase 2: Assessment – Task IV

Environmental Assessment:

- Draft Specialist Assessments completed July 2018
- Peer Review completed July 2018 – February 2019
- Draft Specialist Assessments finalised for Stakeholder Review – March 2019
- Draft Specialist Assessments and SEA Report Chapters released for stakeholder comment → 25 April 2019 – 24 June 2019

Biodiversity and Ecological Impacts (Terrestrial and Aquatic Ecosystems, Flora and Fauna)	Socio-Economic and Planning Assessment	Seismicity
<u>Terrestrial:</u> <ul style="list-style-type: none"> • Fynbos Biome • Savannah and Grassland Biomes • Indian Ocean Coastal Belt Biome • Albany Thicket Biome (<i>Gas Pipeline only</i>) • Succulent and Nama Karoo Biomes <u>Aquatic:</u> <ul style="list-style-type: none"> • Estuaries • Rivers and Wetlands 	<u><i>Gas Pipeline Network</i></u> <ul style="list-style-type: none"> • Benefits and Opportunities of Gas • Regional and Settlement Planning • Governance and Disaster Management <u><i>EGI Expansion</i></u> <ul style="list-style-type: none"> • Socio-Economic Impacts 	<ul style="list-style-type: none"> • Earthquakes and Faults
Bats	Avifauna	Visual (EGI only)

Phase 2: Assessment – Task IV

Peer Review Outcomes

- Mainly queries on TOR (e.g. quantitative assessment for seismicity) and project description (e.g. additional background to be provided on project phases etc.).
- Clarifications on data sources used and recommendations (e.g. use of 2011 Gazette for Threatened Species).
- Clarifications on certain recommendations provided in the reports (e.g. provide alternative methods for dust control in water-stressed catchments (Fynbos)).
- Clarifications on sensitivity assignment to some features (e.g. KZN CBA Irreplaceable scored as "High" instead of "Very High" due to the level of transformation in the biome).
- Recommendations on additional literature sources (e.g. Karoo, IOCB, Seismicity)
- Provision of additional mitigation and management actions
- Layout and grammar changes

Phase 2: Assessment – Task IV

Comments Received during Stakeholder Review (Draft Specialist Assessments):

- Mainly queries on project scope and description
- Clarifications on certain recommendations provided in the reports
- Concerns regarding the exemption from an Environmental Authorisation (EA) within the corridors
- Climate change and greenhouse gas emissions
- Servitude agreements and recommendations
- Provision of management actions and recommendations for the EMP
- Impacts on heritage features
- Grammar changes

Phase 2: Assessment – Task IV - Consultation

Date	Mechanism (*Including emails to registered stakeholders)
6 July 2018	Article published - Engineering News
31 July 2018	ERG and PSC Meeting 2 – Draft Specialist Studies
August 2018	Adverts → update on SEA Process: Cape Argus; Daily News; Diamond Fields Advertiser; The Star
Sep - Oct 2018	Adverts → notify stakeholders of <u>Authority and Public Outreach Round 2</u> : Business Day*; City Press*; Cape Times; Daily Dispatch; Daily News; EP Herald; George Herald; The Gemsbok; The Star; Pretoria News; Diamond Fields Advertiser
8 Oct – 22 Nov 2018	<u>Authority and Public Outreach Round 2</u> : George; Port Elizabeth; East London; Durban; Johannesburg; Upington; Springbok; Cape Town
25 April - 24 June 2019	Stakeholder Consultation – Specialists Studies + Parts 1, 2 and 3 of SEA Report
21 May – 23 May 2019	Adverts → notify stakeholders of <u>Public Information Sharing Session in Durban</u> : Tongaat and Verulam Tabloid; Southern Star; Highway Mail; Springfield Weekly Gazette; Eyethu Umlazi (isiZulu); Isolezwe (isiZulu)
13 June 2019	Second Durban Public Information Sharing Session

Phase 2: Assessment – Task IV - Consultation

Additional Engagements	
ERG and PSC	Meeting 3 – 4 July 2019
Sector Specific Meetings – 2017 - 2019	Ports of Richards Bay, Durban, Ngqura and Saldanha, PICC, WC DEADP, Ingonyama Trust, KZN COGTA, Chamber of Mines, BUSA, EIUG, DAFF, DoD, SAOGA, EWT, Birdlife, DPME, DBSA, WC MinMay Tech, etc.
Municipality Feedback Exercise (Demand Mapping)	April 2018 – December 2018
Industry Feedback Exercise (Demand Mapping)	May 2018 – July 2018

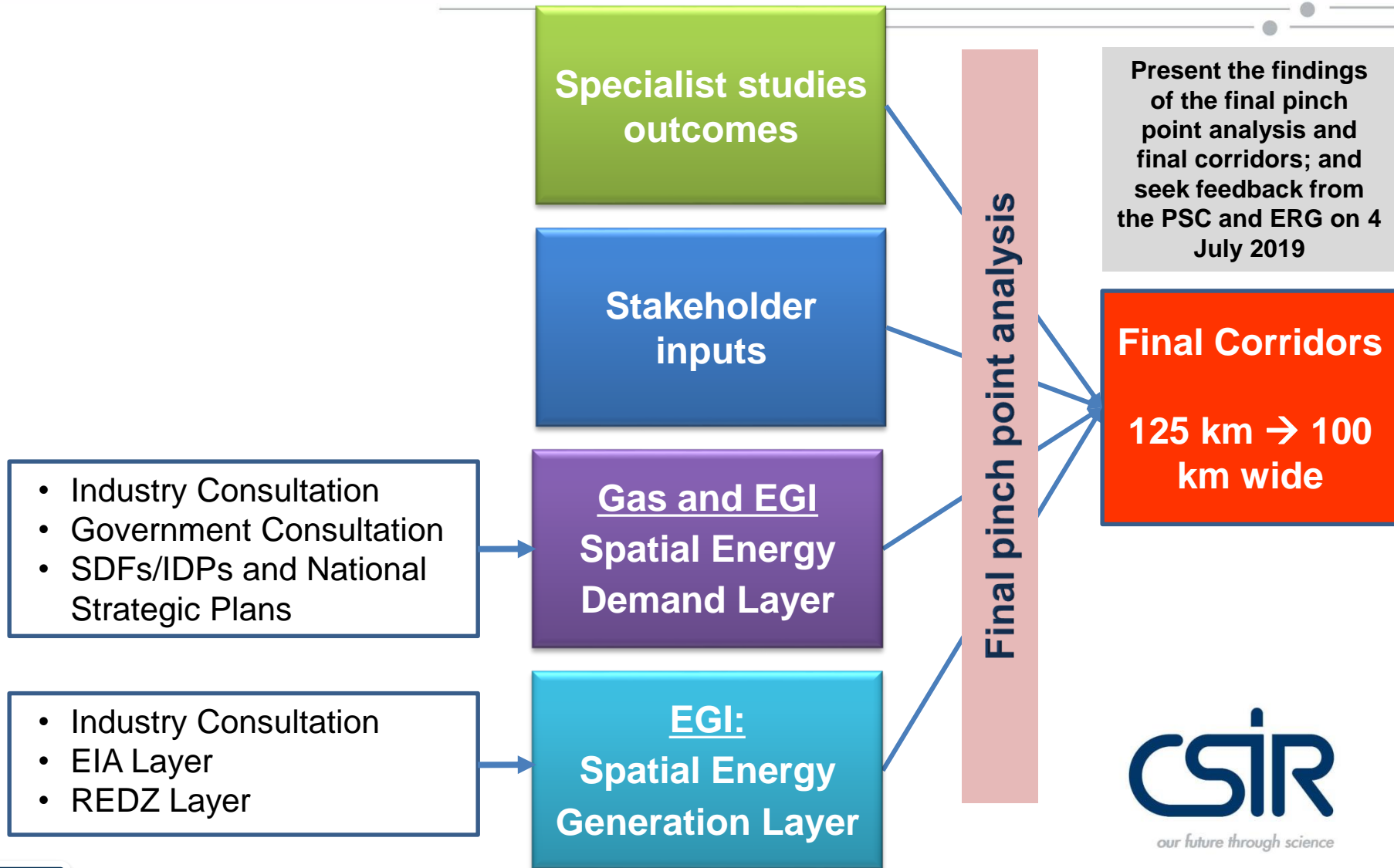
Phase 2: Assessment – Task IV

Tasks to be Completed

- *Undertake Final Pinch Point Analysis → Identification of Final Corridors*
- Compile Final SEA Report
 - Comments and Responses Trail (after comment closure period)
 - Update Specialist Studies, where required
 - Compile additional chapters – Mining Impacts, Final Pinch Point Analysis, Demand Mapping, Public Consultation

Phase 2: Assessment – Task IV

Tasks to be Completed - Final Pinch Point Analysis



SEA Process: Phase 3

Key Stakeholders Consultation
ERG, PSC, Sector Specific Meetings

Public Outreach 1

Public Outreach 2

PHASE 2: Assessment

PHASE 1:
Inception

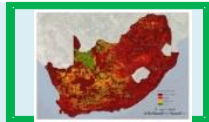
Task I
Initial Corridors
(Starting Point)
June 2017

Preliminary
Corridors



Task II
(Negative Mapping)
Sept 2017-Jan 2018

W2W
Environmental
Constraints Map



W2W
Engineering
Constraints Map



Task III
(Corridor Refinement)
Nov 2017 – Feb 2018

Draft
Corridors



Draft Corridor
Environmental
Constraints Map



Task IV
(Environmental Assessment)
December 2017 – August 2019

Specialist
Studies



We are here
*Draft Specialist
Report Release and
Final Corridor
Alignment*

Review and
Final corridor
alignments

PHASE 3
Decision-support
outputs and
Gazetting

Late 2019 – Early 2020

SEA Outputs

Final Corridors

Final Corridor
Environmental
Constraints Map

MIR, EMPr and
Protocols

Phase 3: Decision Support Outputs

Decision Support Outputs and Gazetting:

- Streamlining of Environmental Authorisation (EA) Process:
 - Revised approach – no longer viable to allow exemption from EA in the corridors.
 - Way forward → Minimum Information Requirements → EA still required (BA Process)
- Protocols will need to be followed
- Generic EMP_r → Local and international researched examples
- Complete above by end 2019



Thank you